



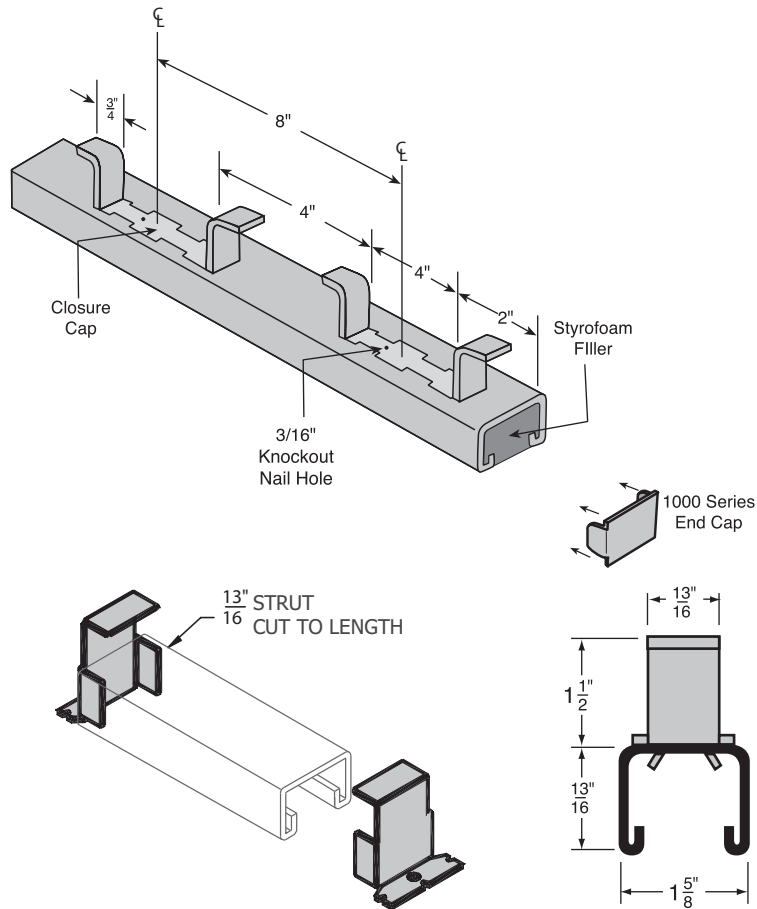
SH164IN

Concrete Insert $1\frac{3}{16}$ x $1\frac{5}{8}$

14 Gauge

SH164IN Concrete Insert is available in pre-galvanized in 10 ft. and 20 ft. lengths. Other materials, finishes and dimensions are available upon request.

LENGTH, IN.	WEIGHT PER 100, LBS.	MAX ALLOWABLE LOAD, LBS.
3	30	450
4	40	600
6	60	850
8	80	1,100
12	121	NO MORE THAN 1700 LBS. PER 12" SECTION
18	181	
24	242	
30	302	
36	363	
48	484	
60	605	
72	726	
84	847	
96	968	
108	1,089	
120	1,210	
240	2,420	



Notes:

- Loading data was calculated in a concrete mixture which was proportioned so that the compression strength of the concrete was 2,500 to 3,000 pounds per square inch and that the load is dependent on the surrounding concrete.
- Tests were performed with a safety factor of 3 and in accordance with the MFMA specifications.
- SH-Strut Concrete Inserts are supplied with either the 1000 or 1001 Series End Cap and either a Styrofoam Filler or Plastic Closure Strip inserted in the strut to prevent any concrete seepage. When ordering, indicate either foam filler or plastic closure strip.
- Inserts should be secured to forms at 16" intervals.