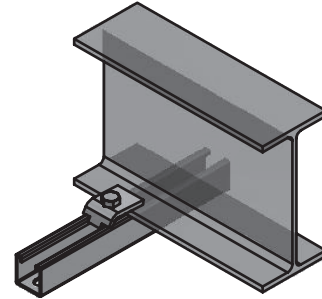
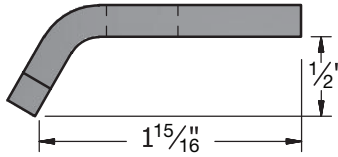
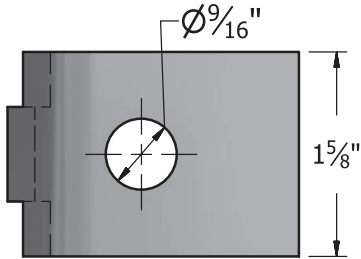
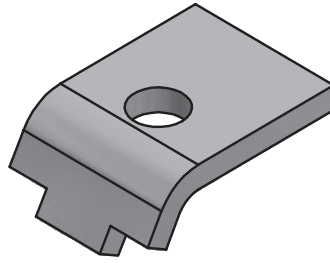




SBC686 (C403)

Beam Clamp

Electro-Galvanized
Wt. 0.30
50/Box



Note: Requires 1/2" - 13 x 1 3/4" Hex Bolt and 1/2" Strut Nut.
(Hex Bolt and Strut Nut are sold separately.)

Maximum Recommended Load: 600 lbs with 12ga strut
500 lbs with 14ga strut