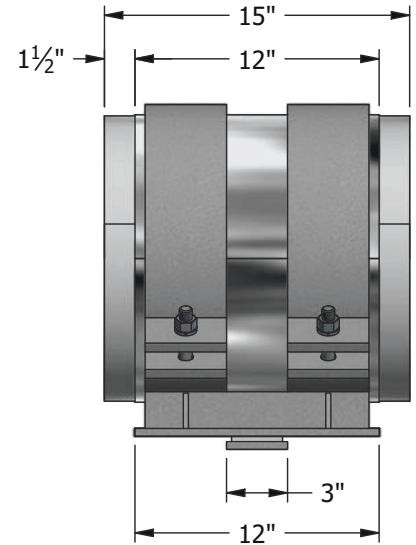
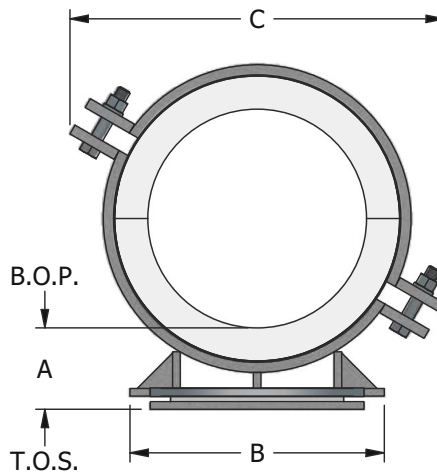
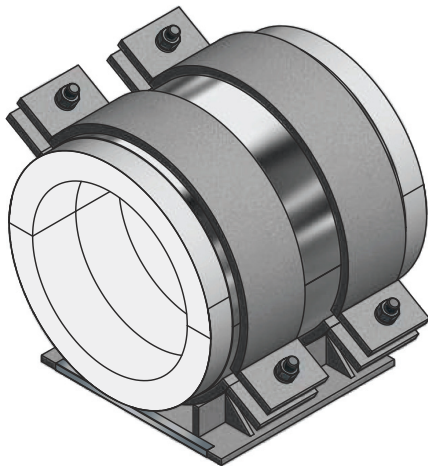


FIG. NS60

Pre-Insulated Sliding Pipe Support
 ± 4 1/2" Axial Movement, Lateral Movement as Noted



Ordering: Fig. NS60 - (Pipe Size) x (Insulation Thickness) - (Insulation Grade)(Finish) e.g. NS60-8x2-5H

PIPE SIZE	VERT. LOAD GRADE 5	VERT. LOAD GRADE 6	INS. THK. = 1"			INS. THK. = 1 1/2"			INS. THK. = 2"			INS. THK. = 2 1/2"			INS. THK. = 3"			INS. THK. = 4"		
			LAT. MOV'T. ± 1 1/2"			LAT. MOV'T. ± 1 3/4"			LAT. MOV'T. ± 2"			LAT. MOV'T. ± 2 1/4"			LAT. MOV'T. ± 2 1/2"			LAT. MOV'T. ± 3"		
			A	B	C	A	B	C	A	B	C	A	B	C	A	B	C	A	B	C
2"	1100	1500	4	6	8.81	4	6.5	9.75	5	8	10.69	5	9	11.56	6	10.5	12.44	6	13.5	14.25
2 1/2"	1350	1800	4	6	9.25	4	7.5	10.69	5	8.5	11.56	5	10	12.44	6	11.5	13.25	6	14	15.13
3"	1600	2100	4	6	9.75	4	7.5	10.69	4	8.5	11.56	5	10	12.44	6	11.5	13.25	6	14	15.13
4"	2500	3350	4	7	10.69	4	8	11.56	4	9.5	12.44	5	11	13.25	6	12.5	14.25	6	15	16
5"	3100	4200	4	7.5	12.25	4	9	13.06	4	10.5	13.94	5	12	14.94	6	13	15.81	6	15.5	17.75
6"	3800	5100	4	8.5	13.06	4	10	13.94	4	11.5	14.94	5	12.5	15.81	6	14	16.69	6	16.5	18.63
8"	5100	6800	4	10.5	14.94	4	11.5	15.81	4	13	16.69	6	14	17.75	6	15.5	18.63	6	18	20.38
10"	6000	8000	4	12	17.31	4	13	18.38	4	14.5	19.25	6	15.5	20.13	6	17	21	6	19	22.75
12"	6600	8800	4	13.5	19.25	4	14.5	20.13	4	16	21	6	17	21.88	6	18	22.75	6	20.5	24.5
14"	7500	10000	4	14	20.13	4	15.5	21	4	16.5	21.88	6	17.5	22.75	6	19	23.63	6	21.5	25.31
16"	8700	11600	4	15.5	23.19	4	16.5	24.06	6	18	24.94	6	19	25.81	6	20.5	26.69	8	22.5	28.38
18"	9600	12800	4	17	24.94	4	18	25.81	6	19.5	26.69	6	20.5	27.5	6	21.5	28.38	8	24	30.13
20"	10200	13600	4	18.5	26.69	4	19.5	27.5	6	20.5	28.38	6	22	29.25	6	23	30.13	8	25.5	31.88
24"	10800	14400	4	21	30.13	4	22.5	31	6	23.5	31.88	6	25	32.75	6	26	33.63	8	28.5	35.31
30"	14100	18800	4	25.5	35.81	6	26.5	36.63	6	28	37.5	6	29	38.38	6	30	39.25	8	32.5	41
36"	16500	22000	4	29.5	43.63	6	31	44.5	6	32	45.38	6	33	46.25	6	34.5	47.13	8	37	48.81
42"	18600	24800	4	34	48.81	6	35	49.69	6	36.5	50.56	6	37.5	51.44	6	38.5	52.31	8	41	54.06

<p>Applications:</p> <ul style="list-style-type: none"> Allows large axial travel and moderate lateral travel while providing vertical support Designed for use on: Chilled Water Hot Water Steam Installation: welded to flat steel surface Temperature Range: +20°F to +1200°F Axial Movement: ± 4 1/2" Lateral Movement: Varies 	<p>Features:</p> <ul style="list-style-type: none"> Eliminates welding to pipe Provides continuous, zero permeability vapor barrier Insulation extends beyond shield 1 1/2" each side Structural insulation for load transfer Stainless steel to UHMW polyethylene slide Static Coefficient of Friction = 0.15 ASTM E-84 Flame Spread/Smoke Developed: 10/20 Thermal Conductivity <ul style="list-style-type: none"> Grade 5 = 0.54 Btu•in/(hr•ft²•°F) @ 200°F Grade 6 = 0.61 Btu•in/(hr•ft²•°F) @ 200°F Insulation chemically bonded 	<p>Material Data:</p> <p>Insulation: Calcium Silicate meeting ASTM C-585 and C-656 Type II Grade 5: 450 psi, 20 pcf Grade 6: 900 psi, 28 pcf other insulation materials, Page 34</p> <p>Base/Clamp: ASTM A-36 Carbon Steel Fasteners: ASTM A-307 Electro-Galv. Plated Slide: ASTM A-240 Type 304 Stainless Steel on UHMW Polyethylene Shield: ASTM A-653 G-90, 18 ga Galv. Steel Vapor Barrier: ASTM E-96 All Service Jacket Finishes: (H) Hot-Dip Galv. per ASTM A-123 (B) Unfinished</p>
---	--	--