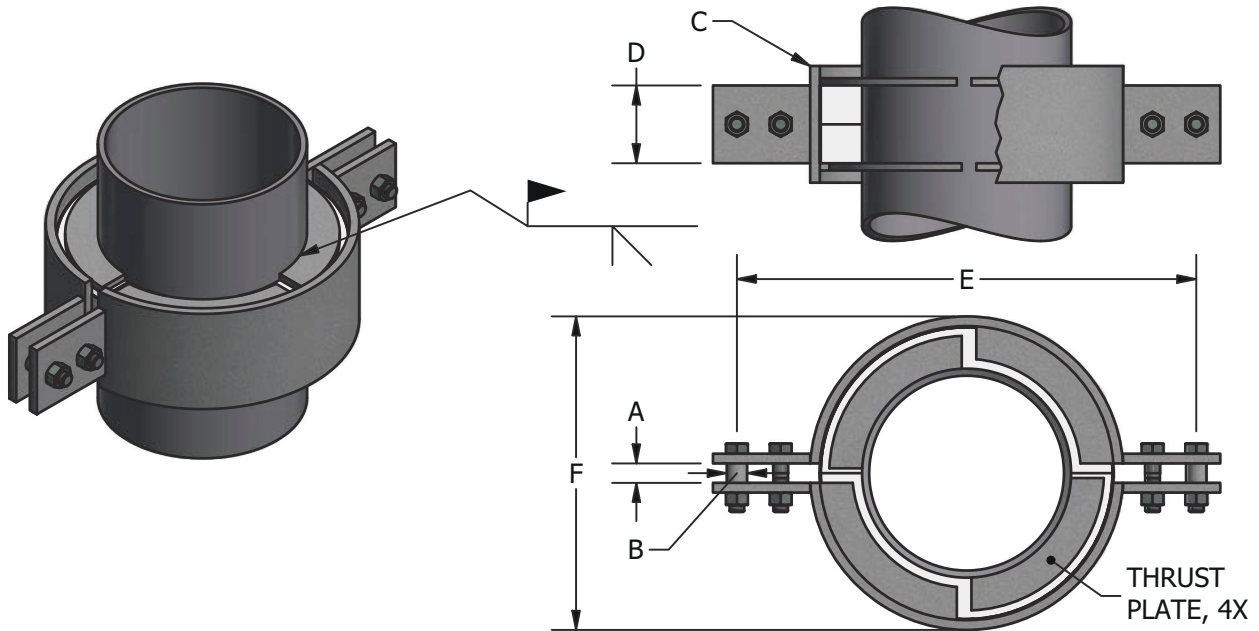




**FIG. NR20**

**Pre-Insulated Pipe Riser Clamp**  
For Upward and Downward Riser Loads



Ordering: Fig. NR20 - (Pipe Size) x (Insulation Thickness)-(Finish) e.g. NR20-3x1-H

| PIPE SIZE | VERT. LOAD | A    | B     | C     | D | INS. THK. = 1" |       | INS. THK. = 1½" |       | INS. THK. = 2" |       | INS. THK. = 2½" |       | INS. THK. = 3" |       | INS. THK. = 4" |       |
|-----------|------------|------|-------|-------|---|----------------|-------|-----------------|-------|----------------|-------|-----------------|-------|----------------|-------|----------------|-------|
|           |            |      |       |       |   | E              | F     | E               | F     | E              | F     | E               | F     | E              | F     | E              | F     |
| 2"        | 750        | 0.63 | 1.05  | ½ x 4 | 2 | 12.38          | 5.63  | 13.5            | 6.69  | 14.5           | 7.75  | 15.5            | 8.75  | 16.5           | 9.75  | 18.63          | 11.88 |
| 2½"       | 900        | 0.63 | 1.05  | ½ x 4 | 2 | 12.88          | 6.13  | 14.25           | 7.75  | 15.5           | 8.75  | 16.5            | 9.75  | 17.5           | 10.75 | 19.63          | 12.88 |
| 3"        | 1200       | 0.63 | 1.05  | ½ x 4 | 2 | 13.5           | 6.69  | 14.5            | 7.75  | 15.5           | 8.75  | 16.5            | 9.75  | 17.5           | 10.75 | 19.63          | 12.88 |
| 4"        | 1800       | 0.63 | 1.05  | ½ x 4 | 2 | 14.5           | 7.75  | 15.5            | 8.75  | 16.5           | 9.75  | 17.63           | 10.75 | 18.63          | 11.88 | 20.63          | 13.88 |
| 5"        | 2400       | 0.63 | 1.05  | ½ x 4 | 2 | 15.5           | 8.75  | 16.5            | 9.75  | 17.5           | 10.75 | 18.63           | 11.88 | 19.63          | 12.88 | 21.88          | 15.13 |
| 6"        | 3000       | 0.88 | 1.05  | ½ x 6 | 4 | 16.5           | 9.75  | 17.63           | 10.75 | 18.63          | 11.88 | 19.63           | 12.88 | 20.63          | 13.88 | 22.88          | 16.13 |
| 8"        | 3900       | 0.88 | 1.05  | ½ x 6 | 4 | 18.63          | 11.88 | 19.63           | 12.88 | 20.63          | 13.88 | 21.75           | 15.13 | 22.88          | 16.13 | 24.88          | 18.13 |
| 10"       | 4800       | 1.13 | 1.05  | ½ x 6 | 4 | 21.38          | 13.88 | 22.5            | 15.13 | 23.63          | 16.13 | 24.63           | 17.13 | 25.63          | 18.13 | 27.63          | 20.13 |
| 12"       | 6800       | 1.13 | 1.315 | ½ x 8 | 6 | 23.88          | 16.13 | 24.88           | 17.13 | 25.88          | 18.13 | 26.88           | 19.13 | 27.88          | 20.13 | 29.88          | 22.13 |
| 14"       | 8000       | 1.13 | 1.315 | ½ x 8 | 6 | 24.88          | 17.13 | 25.88           | 18.13 | 26.88          | 19.13 | 27.88           | 20.13 | 28.88          | 21.13 | 30.88          | 23.13 |
| 16"       | 9200       | 1.13 | 1.315 | ¾ x 8 | 6 | 27.38          | 19.38 | 28.38           | 20.38 | 29.38          | 21.38 | 30.38           | 22.38 | 31.38          | 23.38 | 33.38          | 25.38 |
| 18"       | 10000      | 1.13 | 1.315 | ¾ x 8 | 6 | 29.38          | 21.38 | 30.38           | 22.38 | 31.38          | 23.38 | 32.38           | 24.38 | 33.38          | 25.38 | 35.38          | 27.38 |
| 20"       | 10800      | 1.13 | 1.315 | ¾ x 8 | 6 | 31.38          | 23.38 | 32.38           | 24.38 | 33.38          | 25.38 | 34.38           | 26.38 | 35.38          | 27.38 | 37.38          | 29.38 |
| 24"       | 11200      | 1.13 | 1.66  | ¾ x 8 | 6 | 36.38          | 27.38 | 37.38           | 28.38 | 38.38          | 29.38 | 39.38           | 30.38 | 40.38          | 31.38 | 42.38          | 33.38 |

|  |  |  |
|--|--|--|
| <p><b>Applications:</b></p> <ul style="list-style-type: none"> <li>Provides vertical support to upward and downward riser loads</li> <li>Designed for use on:<br/>Chilled Water   Hot Water   Steam</li> <li>Installation: welded to a flat surface or rigidly braced</li> <li>Temperature Range: +20°F to +1200°F</li> <li>Vertical Load ratings do not include local stress evaluation at thrust plate/pipe wall interface. Contact factory for assistance.</li> </ul> | <p><b>Features:</b></p> <ul style="list-style-type: none"> <li>Provides continuous, zero permeability vapor barrier</li> <li>Structural insulation for load transfer</li> <li>ASTM E-84 Flame Spread/Smoke Developed: 10/20</li> <li>Thermal Conductivity<br/>0.61 Btu•in/(hr•ft²•°F) @ 200°F</li> <li>Insulation chemically bonded</li> <li>Four thrust plates shipped loose for field welding</li> <li>Outside hanger bolt is offset to accommodate weldless eye nut on sizes 6" and above.</li> <li>See National Pipe Hanger Corporation's Pipe Hangers and Supports Catalog for hardware and upper attachments.</li> </ul> | <p><b>Material Data:</b></p> <p>Insulation: Calcium Silicate meeting ASTM C-585 and C-656 Type II Grade 6: 900 psi, 28 pcf other insulation materials, Page 34</p> <p>Base/Clamp: ASTM A-36 Carbon Steel</p> <p>Fasteners: ASTM A-307 Electro-Galv. Plated</p> <p>Shield: ASTM A-653 G-90, 18 ga Galv. Steel</p> <p>Vapor Barrier: ASTM E-96 All Service Jacket</p> <p>Finishes: (H) Hot-Dip Galv. per ASTM A-123 (B) Unfinished</p> |
|--|--|--|