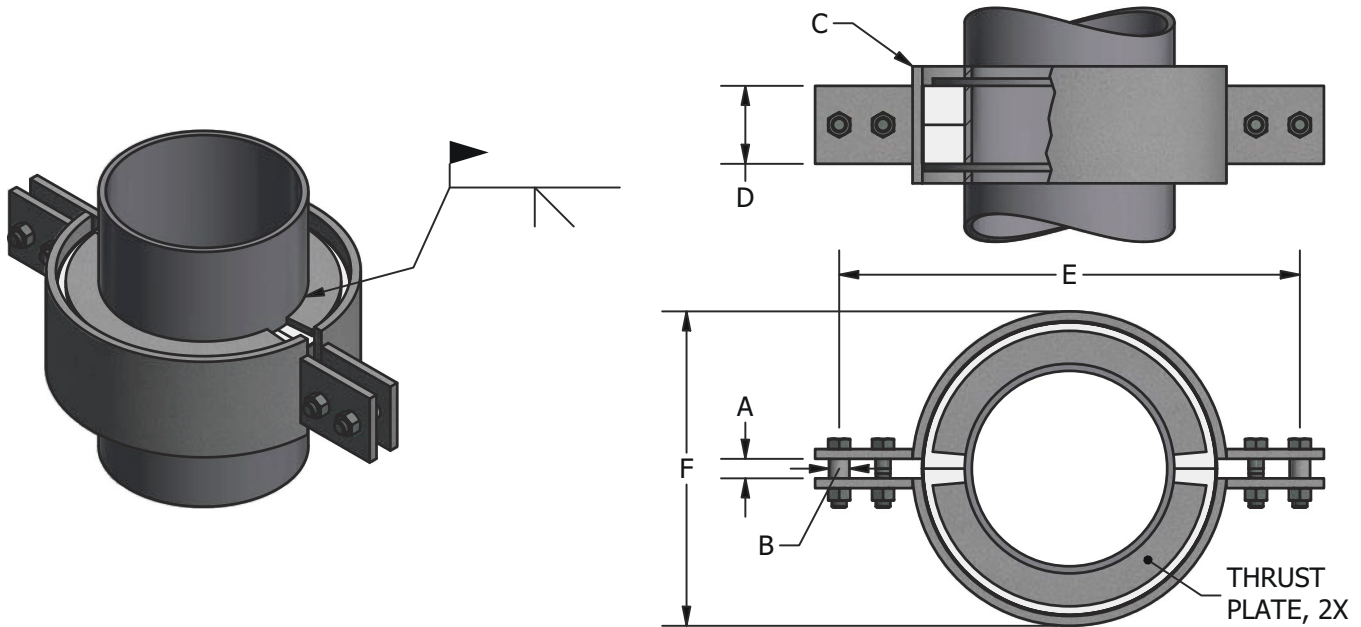


**FIG. NR10**

**Pre-Insulated Pipe Riser Clamp**  
For Downward Riser Loads



Ordering: Fig. NR10 - (Pipe Size) x (Insulation Thickness)-(Finish) e.g. NR10-3x1-H

PIPE SIZE	VERT. LOAD	A	B	C	D	INS. THK. = 1"		INS. THK. = 1½"		INS. THK. = 2"		INS. THK. = 2½"		INS. THK. = 3"		INS. THK. = 4"	
						E	F	E	F	E	F	E	F	E	F	E	F
2"	750	0.63	1.05	½ x 4	2	12.38	5.63	13.5	6.69	14.5	7.75	15.5	8.75	16.5	9.75	18.63	11.88
2½"	900	0.63	1.05	½ x 4	2	12.88	6.13	14.25	7.75	15.5	8.75	16.5	9.75	17.5	10.75	19.63	12.88
3"	1200	0.63	1.05	½ x 4	2	13.5	6.69	14.5	7.75	15.5	8.75	16.5	9.75	17.5	10.75	19.63	12.88
4"	1800	0.63	1.05	½ x 4	2	14.5	7.75	15.5	8.75	16.5	9.75	17.63	10.75	18.63	11.88	20.63	13.88
5"	2400	0.63	1.05	½ x 4	2	15.5	8.75	16.5	9.75	17.5	10.75	18.63	11.88	19.63	12.88	21.88	15.13
6"	3000	0.88	1.05	½ x 6	4	16.5	9.75	17.63	10.75	18.63	11.88	19.63	12.88	20.63	13.88	22.88	16.13
8"	3900	0.88	1.05	½ x 6	4	18.63	11.88	19.63	12.88	20.63	13.88	21.75	15.13	22.88	16.13	24.88	18.13
10"	4800	0.88	1.05	½ x 6	4	21.38	13.88	22.5	15.13	23.63	16.13	24.63	17.13	25.63	18.13	27.63	20.13
12"	6800	1.13	1.315	½ x 8	6	23.88	16.13	24.88	17.13	25.88	18.13	26.88	19.13	27.88	20.13	29.88	22.13
14"	8000	1.13	1.315	½ x 8	6	24.88	17.13	25.88	18.13	26.88	19.13	27.88	20.13	28.88	21.13	30.88	23.13
16"	9200	1.13	1.315	¾ x 8	6	27.38	19.38	28.38	20.38	29.38	21.38	30.38	22.38	31.38	23.38	33.38	25.38
18"	10000	1.13	1.315	¾ x 8	6	29.38	21.38	30.38	22.38	31.38	23.38	32.38	24.38	33.38	25.38	35.38	27.38
20"	10800	1.13	1.315	¾ x 8	6	31.38	23.38	32.38	24.38	33.38	25.38	34.38	26.38	35.38	27.38	37.38	29.38
24"	11200	1.13	1.66	¾ x 8	6	36.38	27.38	37.38	28.38	38.38	29.38	39.38	30.38	40.38	31.38	42.38	33.38

<p><b>Applications:</b></p> <ul style="list-style-type: none"> <li>Provides vertical support to downward riser loads</li> <li>Designed for use on: Chilled Water   Hot Water   Steam</li> <li>Installation: hung from two threaded rods or rest on a flat surface</li> <li>Temperature Range: +20°F to +1200°F</li> <li>Vertical Load ratings do not include local stress evaluation at thrust plate/pipe wall interface. Contact factory for assistance.</li> </ul>	<p><b>Features:</b></p> <ul style="list-style-type: none"> <li>Provides continuous, zero permeability vapor barrier</li> <li>Structural insulation for load transfer</li> <li>ASTM E-84 Flame Spread/Smoke Developed: 10/20</li> <li>Thermal Conductivity 0.61 Btu•in/(hr•ft²•°F) @ 200°F</li> <li>Insulation chemically bonded</li> <li>Two thrust plates shipped loose for field welding</li> <li>Outside hanger bolt is offset to accommodate weldless eye nut on sizes 6" and above.</li> <li>See National Pipe Hanger Corporation's Pipe Hangers and Supports Catalog for hardware and upper attachments.</li> </ul>	<p><b>Material Data:</b></p> <p>Insulation: Calcium Silicate meeting ASTM C-585 and C-656 Type II Grade 6: 900 psi, 28 pcf other insulation materials, Page 34</p> <p>Base/Clamp: ASTM A-36 Carbon Steel</p> <p>Fasteners: ASTM A-307 Electro-Galv. Plated</p> <p>Shield: ASTM A-653 G-90, 18 ga Galv. Steel</p> <p>Vapor Barrier: ASTM E-96 All Service Jacket</p> <p>Finishes: (H) Hot-Dip Galv. per ASTM A-123 (B) Unfinished</p>
--	---	--