



NATIONAL PIPE HANGER CORPORATION

CORPORATE HEADQUARTERS - 200 CAMPUS DR, MOUNT HOLLY, NJ 08060 TEL: (609) 261-5353 FAX: (609) 261-3249
MD OFFICE - 15850 COMMERCE CT, SUITE P, UPPER MARLBORO, MD 20774 TEL: (301) 568-8805 FAX: (301) 967-1456
E-MAIL: SALES@NATIONALPIPEHANGER.COM WEBSITE: WWW.NATIONALPIPEHANGER.COM

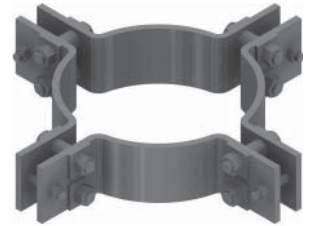
ATTENTION: WATER AND SEWER DISTRIBUTORS OF AMERICA



**FOUR-BOLT SOCKET
CLAMP FOR DI PIPE**



**SOCKET CLAMP
FOR DI PIPE**



**FOUR SECTION
RODDING BAND**



CURB BOX KEY

WE MANUFACTURE



**ADJUSTABLE
GATE VALVE KEY**



**ADJUSTABLE PIPE
SADDLE SUPPORT**



**CORPORATION
EYE BOLT**



**WATERPROOF
SLEEVE**