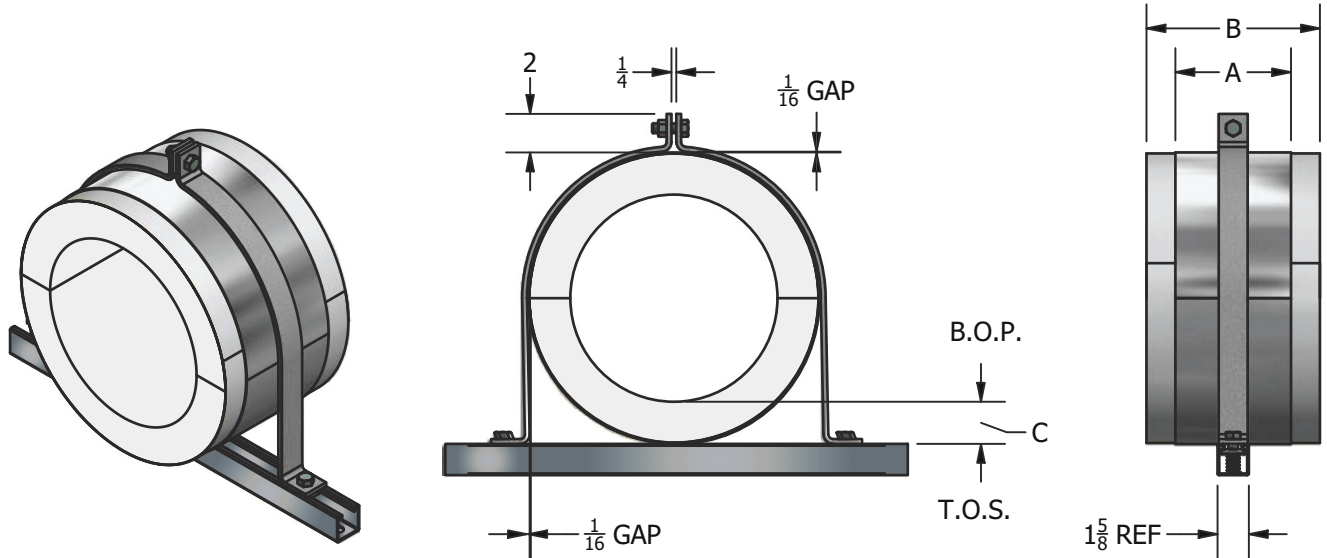


FIG. NC80

Pre-Insulated Guided Strut Clamp
For Use on Strut, Laterally Guided



Ordering: Fig. NC80 - (Pipe Size) x (Insulation Thickness)-(Finish) e.g. NC80-3x1-H

PIPE SIZE	VERTICAL LOAD	LATERAL LOAD	INS. THK. = 1"		INS. THK. = 1 1/2"		INS. THK. = 2"		INS. THK. = 2 1/2"		INS. THK. = 3"		INS. THK. = 4"	
			A / B	C	A / B	C	A / B	C	A / B	C	A / B	C	A / B	C
2"	130	230	4 / 6	1.125	4 / 6	1.6875	4 / 6	2.1875	4 / 6	2.6875	4 / 6	3.1875	4 / 6	4.25
2 1/2"	150	275	4 / 6	1.125	4 / 6	1.9375	4 / 6	2.4375	4 / 6	2.9375	4 / 6	3.4375	4 / 6	4.5
3"	170	325	4 / 6	1.125	4 / 6	1.625	4 / 6	2.125	4 / 6	2.625	4 / 6	3.125	4 / 6	4.1875
4"	170	380	4 / 6	1.125	4 / 6	1.625	4 / 6	2.125	4 / 6	2.625	4 / 6	3.1875	4 / 6	4.1875
5"	260	400	4 / 6	1.125	4 / 6	1.625	4 / 6	2.125	4 / 6	2.6875	4 / 6	3.1875	4 / 6	4.3125
6"	330	400	6 / 9	1.0625	6 / 9	1.5625	6 / 9	2.125	6 / 9	2.625	6 / 9	3.125	6 / 9	4.25
8"	510	400	6 / 9	1.125	6 / 9	1.625	6 / 9	2.125	6 / 9	2.75	6 / 9	3.25	6 / 9	4.25
10"	830	400	6 / 9	1.0625	6 / 9	1.6875	6 / 9	2.1875	6 / 9	2.6875	6 / 9	3.1875	6 / 9	4.1875
12"	1200	400	6 / 9	1.1875	6 / 9	1.6875	6 / 9	2.1875	6 / 9	2.6875	6 / 9	3.1875	6 / 9	4.1875

<p>Applications:</p> <ul style="list-style-type: none"> Provides light duty vertical support and lateral support for buckling and movement control Designed for use on: Chilled Water Hot Water Steam Installation: clamped to 1 5/8" wide strut Temperature Range: +20°F to +1200°F Lateral Travel: ± 1/16" Vertical Travel: + 1/16" up 	<p>Features:</p> <ul style="list-style-type: none"> Eliminates welding to pipe Provides continuous, zero permeability vapor barrier Insulation extends beyond shield 1"-1 1/2" each side Structural insulation for load transfer ASTM E-84 Flame Spread/Smoke Developed: 10/20 Thermal Conductivity 0.39 Btu•in/(hr•ft²•°F) @ 200°F Insulation chemically bonded 	<p>Material Data:</p> <p>Insulation: Calcium Silicate meeting ASTM C-585 and C-533 Type I Pro-Shield: 100 psi, 14 pcf standard with 450 psi, 20 pcf insert for 12" pipe other insulation materials, Page 34</p> <p>Clamp: ASTM A-36 Carbon Steel, 1/4" x 1 1/2"</p> <p>Fasteners: ASTM A-307 Electro-Galv. Plated Steel</p> <p>Shield: ASTM A-653 G-90 Galv. Steel (see Pro-Shield for Gauge)</p> <p>Vapor Barrier: ASTM E-96 All Service Jacket</p> <p>Finishes: (H) Hot-Dip Galv. per ASTM A-123 (B) Unfinished</p>
---	---	--