



KLO-9

Klo-Shure® 9-Series Insulation Coupling w/ Strut Clamp

SERVICE: For use on tube and pipe runs subject to damage from shock and vibration, and provides superior vapor barrier protection at suspension points. Sized for use with fiberglass insulation and acceptable for horizontal, vertical and inverted installations. Clamp spacing should be no more than 60 diameters. Install clamps as close as possible to each side of a bend to prevent movement.
MADE IN THE USA

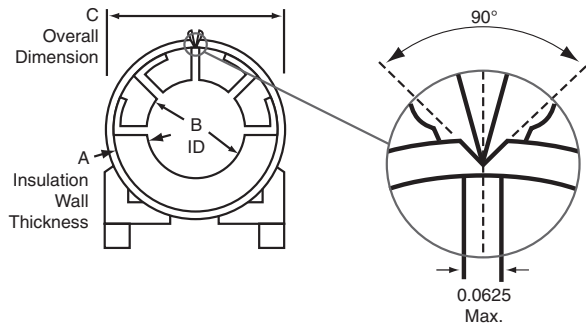
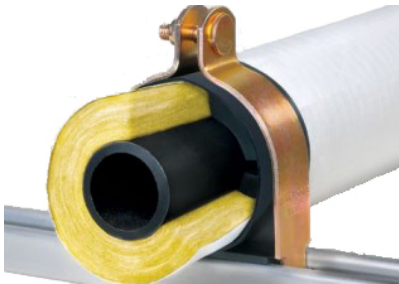
MATERIAL: Carbon Steel clamp with a high strength Thermoplastic Olefin (TPO) insert

FINISH: Yellow Trivalent (non-hex) plating

TEMP RANGE: -60°F to 225°F

APPROVALS: MSS SP-58 Type 61; UL Classified 2043 (25/50) for use in plenums and air handling systems

ORDERING: Specify figure number.



INSULATION THICKNESS A	FIG#	PIPE SIZE	KLO-SHURE ID - PIPE OD B	OVERALL DIMENSION C	STD. PKG.
1/2	924084	1/2	0.840	2.027	20
	924105	3/4	1.050	2.287	20
	924131	1	1.315	2.502	10
	924166	1 1/4	1.660	2.847	10
	924190	1 1/2	1.900	3.287	10
1	928084	1/2	0.840	3.010	10
	928105	3/4	1.050	3.010	10
	928131	1	1.315	3.640	10
	928166	1 1/4	1.660	3.640	10
	928190	1 1/2	1.900	3.952	10
	928237	2	2.375	4.650	10
1 1/2	929084	1/2	0.840	4.140	10
	929105	3/4	1.050	4.140	10
	929131	1	1.315	4.650	10
	929166	1 1/4	1.660	5.140	10
	929190	1 1/2	1.900	5.140	10

INSULATION THICKNESS A	FIG#	KLO-SHURE ID - TUBE OD B	OVERALL DIMENSION C	STD. PKG.
1/2	924062	5/8	1.787	20
	924087	7/8	2.027	20
	924112	1 1/8	2.287	20
	924137	1 3/8	2.502	10
	924162	1 5/8	2.847	10
	924212	2 1/8	3.287	10
1	928062	5/8	3.010	10
	928087	7/8	3.010	10
	928112	1 1/8	3.010	10
	928137	1 3/8	3.640	10
	928162	1 5/8	3.640	10
	928212	2 1/8	4.140	10
	928262	2 5/8	4.650	10
1 1/2	928312	3 1/8	5.140	10
	929087	7/8	4.140	10
	929112	1 1/8	4.140	10
	929137	1 3/8	4.650	10
	929162	1 5/8	5.140	10
	929212	2 1/8	5.138	10