

**HYDR-D**

**Hydra-Zorb® Cushion Clamp**



**SERVICE:** For use on uninsulated tube and pipe runs subject to damage from shock, movement and vibration, eliminating metal to metal contact. Clamps should be spaced no more than 60 diameters apart or a maximum of 5 feet.  
**MADE IN THE USA**

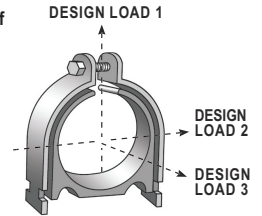
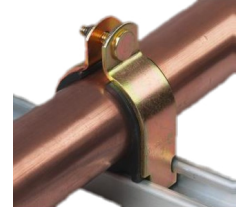
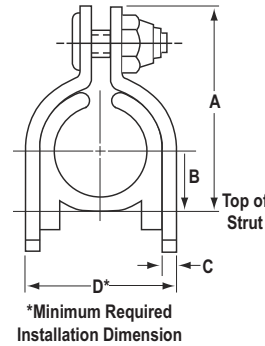
**MATERIAL:** Carbon Steel clamp with a thermoplastic elastomer cushion

**FINISH:** Yellow Trivalent (non-hex) plating

**TEMP RANGE:** -65°F to +275°F

**APPROVALS:** MSS SP-58 Type 61; UL 2043 (25/50) for use in plenums and air handling systems

**ORDERING:** Specify figure number and tube or pipe size. (Other sizes and materials are available upon request.)



CUSHION CLAMPS FOR TUBE											
PART #	OD TUBE SIZE	TUBE SIZE	DIMENSION A	DIMENSION B	DIMENSION C	DIMENSION D	MAX. REC. LOAD, LBS.			STD. PKG.	WEIGHT EACH, LBS.
							DESIGN LOAD 1	DESIGN LOAD 2	DESIGN LOAD 3		
100025	1/4	1/8	1.11	0.22	0.075	0.62	400	50	50	25	0.13
100037	3/8	1/4	1.24	0.28	0.075	0.75	400	50	50	25	0.14
100050	1/2	3/8	1.36	0.34	0.075	0.87	400	50	50	25	0.15
100062	5/8	1/2	1.50	0.41	0.075	1.00	400	50	50	25	0.16
100075	3/4	5/8	1.78	0.53	0.075	1.33	600	75	75	25	0.19
100087	7/8	3/4	1.91	0.58	0.075	1.45	600	75	75	25	0.21
100100	1	7/8	2.03	0.66	0.075	1.66	600	75	75	25	0.29
100112	1 1/8	1	2.16	0.72	0.075	1.79	600	75	75	20	0.31
100125	1 1/4	1 1/8	2.30	0.78	0.105	1.92	600	75	75	20	0.33
100137	1 3/8	1 1/4	2.75	0.91	0.119	2.22	600	75	75	20	0.42
100150	1 1/2	1 3/8	2.75	0.91	0.119	2.22	600	75	75	20	0.38
100162	1 5/8	1 1/2	3.03	1.03	0.119	2.47	600	75	75	20	0.48
100175	1 3/4	1 5/8	3.03	1.03	0.119	2.47	800	125	125	20	0.46
100187	1 7/8	1 3/4	3.28	1.16	0.119	2.47	800	125	125	20	0.52
100200	2	1 7/8	3.28	1.16	0.119	2.72	800	125	125	10	0.50
100212	2 1/8	2	3.53	1.28	0.119	2.97	800	125	125	10	0.57
100225	2 1/4	2 3/8	3.78	1.41	0.119	3.22	800	125	125	10	0.62
100237	2 3/8	2 1/4	3.78	1.41	0.119	3.22	800	125	125	10	0.66
100251	2 1/2	2 3/8	4.03	1.53	0.119	3.47	800	125	125	5	0.60
100262	2 5/8	2 1/2	4.03	1.53	0.119	3.47	800	125	125	5	0.58
100300	3	2 7/8	4.52	1.78	0.119	3.97	800	125	125	5	0.69
100312	3 1/8	3	4.52	1.78	0.119	3.97	800	125	125	5	0.68
100362	3 5/8	3 1/2	5.03	2.03	0.119	4.47	1,000	200	150	5	0.76
100412	4 1/8	4	5.66	2.34	0.119	5.09	1,000	200	150	5	0.88

CUSHION CLAMPS FOR PIPE										
PART #	PIPE SIZE	DIMENSION A	DIMENSION B	DIMENSION C	DIMENSION D	MAX. REC. LOAD, LBS.			STD. PKG.	WEIGHT EACH, LBS.
						DESIGN LOAD 1	DESIGN LOAD 2	DESIGN LOAD 3		
200050	1/2	1.91	0.59	0.075	1.45	600	75	75	25	0.21
200075	3/4	2.16	0.72	0.075	1.79	600	75	75	20	0.31
200100	1	2.75	0.91	0.119	2.22	600	75	75	20	0.43
200125	1 1/4	3.03	1.03	0.119	2.47	800	125	125	20	0.48
200150	1 1/2	3.28	1.16	0.119	2.47	800	125	125	20	0.52
200200	2	3.78	1.41	0.119	3.22	800	125	125	10	0.61
200250	2 1/2	4.27	1.66	0.119	3.72	800	125	125	5	0.62
200300	3	4.91	1.97	0.119	4.36	1,000	200	150	5	0.72
200350	3 1/2	5.53	2.28	0.119	4.97	1,000	200	150	5	0.88
200400	4	6.03	2.53	0.119	5.47	1,000	200	150	5	0.95