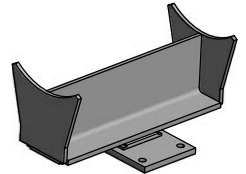
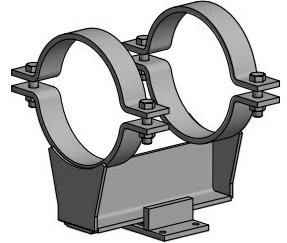




**FIG. 950**

**Pipe Slide, Guide and Anchor**



**SERVICE:** To support pipe while providing axial movement combined with lateral movement, lateral guidance, uplift restraint and/or anchorage. Slides, guides and uplift restraints to be welded or bolted to structure and welded or clamped to the pipe. Glass filled virgin Teflon™ (PTFE) slide bearing provides low coefficient of friction to reduce stress on the pipe and supporting structure. Anchors to be continuously welded to pipe and structure only.

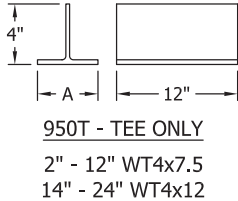
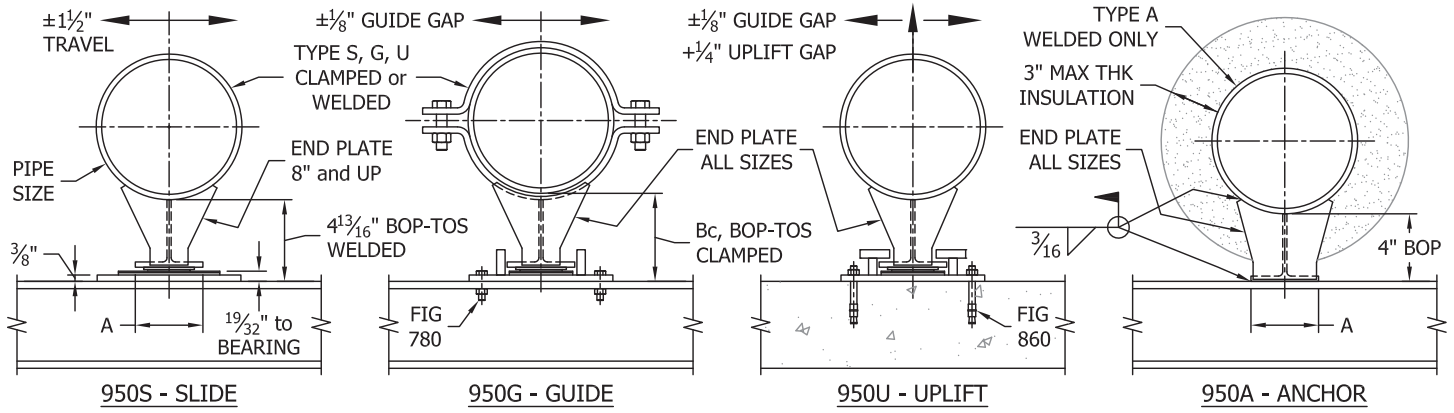
**MATERIAL:** Carbon Steel meeting ASTM: A36, A307 Gr A and A563 Gr A  
Slide Bearing: PTFE-to-PTFE, average coefficient of friction = 0.06

**FINISH:** Black or Hot-Dip Galvanized meeting ASTM A123

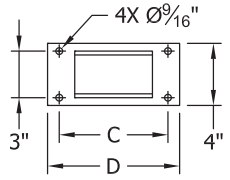
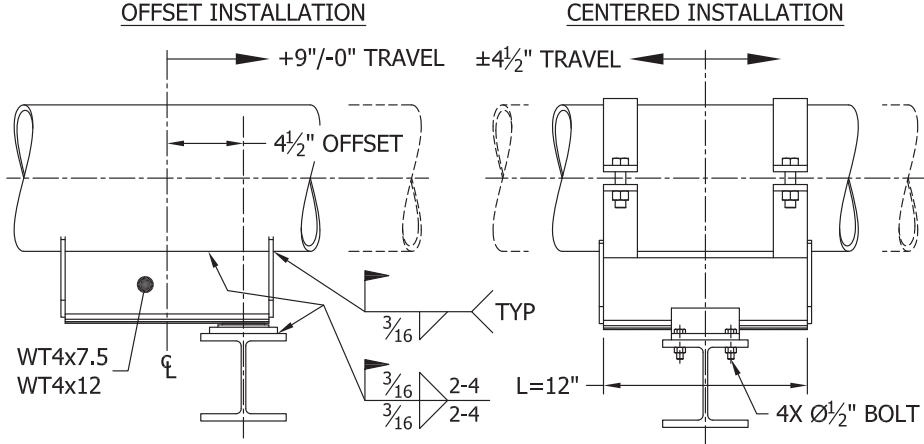
**MAX TEMP:** 650°F at pipe wall  
300°F at PTFE bearing.

**STANDARDS:** MSS SP-58 Type 35

**ORDERING:** Specify figure number, type, pipe size, pipe attachment type and finish.  
(Order mounting hardware separately.)



DIMENSIONAL DATA		
PIPE SIZE	A	Bc
2 - 5	4	5 <sup>1</sup> / <sub>16</sub>
6 - 8	4	5 <sup>5</sup> / <sub>16</sub>
10 - 12	4	5 <sup>5</sup> / <sub>16</sub>
14 - 16	6 <sup>1</sup> / <sub>2</sub>	5 <sup>5</sup> / <sub>16</sub>
18 - 24	6 <sup>1</sup> / <sub>2</sub>	5 <sup>7</sup> / <sub>16</sub>



PIPE SIZE	C	D
2 - 12	7	8 <sup>1</sup> / <sub>2</sub>
14 - 24	9 <sup>1</sup> / <sub>2</sub>	11

PIPE ATTACHMENT: WELDED (W)  
ALL TYPES

PIPE ATTACHMENT: CLAMPED (C)  
TYPES: S, G, and U ONLY

EX: FIG 950S-12-W-HDG

EX: FIG 950G-12-C-BLK

MAXIMUM RECOMMENDED LOADS					
TYPE	PIPE SIZE	VERTICAL DOWN	VERTICAL UP	LATERAL	AXIAL
S	2 - 24	8000	n/a	n/a	n/a
	2 - 6	8000	n/a	1000	n/a
G	8 - 24	8000	n/a	2000	n/a
	2 - 6	8000	800	1000	n/a
U	8 - 24	8000	800	2000	n/a
	2 - 6	4000	800	1000	2000
A	8 - 24	8000	800	2000	5000

- Notes:**
- Special fabricated tee and base available for specified axial and lateral travel, insulation banding slots, heat loss notches and/or grade 304 and 316 stainless steel. Provide performance criteria and dimensions A, BOP, C, D and/or L.
  - For PTFE bearing temperatures 300°F to 500°F, specify high temperature bearing adhesive. Available in black finish only over 350°F.
  - Alternative PTFE-on-stainless steel slide bearing option available.
  - Weld in accordance with AWS D1.1 with 70000 psi filler metal. Minimum weld sizes shown. Tee-to-pipe and base-to-structure welds may be continuous.
  - Anchor loads for standard weight carbon steel pipe at design conditions 400 psi and 500°F. Corrosion allowance  $\frac{1}{32}$ " for pipe sizes  $\leq 6$ " and  $\frac{1}{16}$ " for sizes  $\geq 8$ ".