



**FIG. 835**

**Sheet Metal Sleeve w/ Cap**

**FIG. 836**

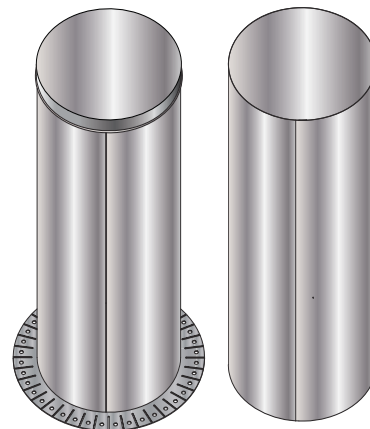
**Sheet Metal Sleeve w/ No Cap**

**SERVICE:** For attaching to roof deck to provide a channel for piping, eliminating the need to core drill. Sleeves are made in all heights and diameters with optional tabs to facilitate fastening and an optional cap to keep out wet cement until pipe installation.

**MATERIAL:** 24ga Galvanized Sheet Metal

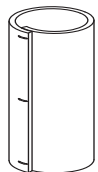
**FINISH:** Galvanized

**ORDERING:** Specify figure number, diameter, height, type, with or without tabs and material.

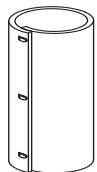


**FIG. #835**  
Shown with optional nailing tabs

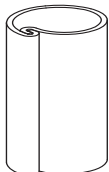
**FIG. #836**



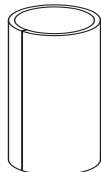
**TYPE 1**  
Stapled or Spot-Welded



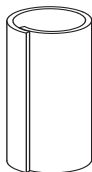
**TYPE 2**  
Locking Tabs



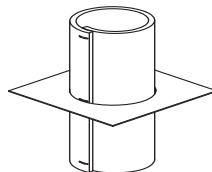
**TYPE 3**  
Finger Locks



**TYPE 4**  
Split, Butt Edges



**TYPE 5**  
Split, Overlap



**TYPE 6**  
Metal Deck Flange

Spot-Welded 100 pcs Min.