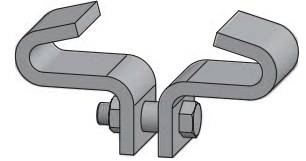




FIG. 680

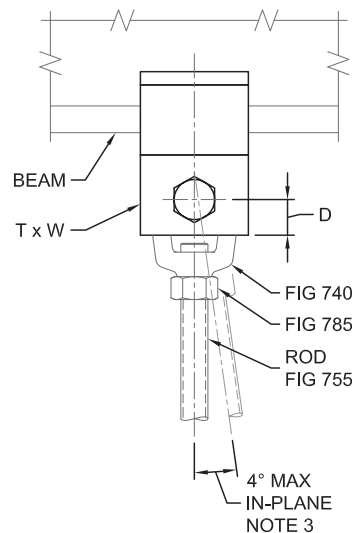
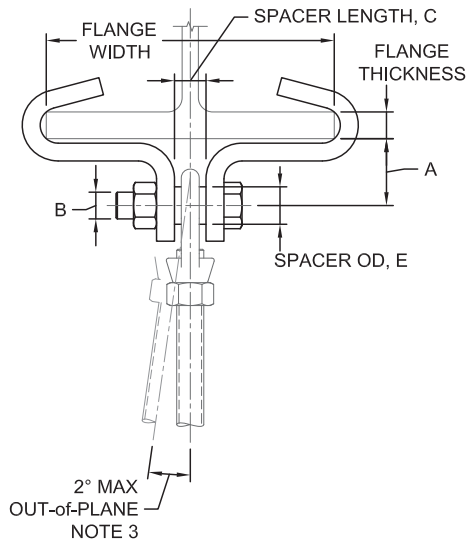
Center Beam Clamp



- SERVICE:** To hang piping with a threaded rod from the bottom center of wide flange beams (W-Shape) or American standard beams (S-Shape). Permits horizontal pipe movement through hanger rod rotation. For hanger assemblies loaded by static tensile forces from piping or similar services.
- MATERIAL:** Carbon Steel meeting ASTM: A36, A500 Gr B, A307 Gr A and A563 Gr A
Stainless Steel Type 304 and 316 meeting ASTM: A240, A312, F593 and F594
- FINISH:** Electro-Galvanized meeting ASTM B633
- MAX TEMP:** 650°F for Black Carbon Steel and Stainless Steel
350°F for Electro-Galvanized Carbon Steel
- STANDARDS:** MSS SP-58 Type 21, FS WW-H-171E Type 21
- ORDERING:** Specify figure number, size, flange width, flange thickness, material and finish. (Order installation hardware separately.)

FLANGE		WEIGHT EACH, LBS.	
WIDTH	MAX THK	SIZE 2	SIZE 5
4	1/2	1.1	3.8
5	5/8	1.2	4.1
5 1/2	5/8	1.3	4.4
6	3/4	1.3	4.4
6 1/2	3/4	1.4	4.7
7	7/8	1.4	4.7
8	7/8	3.3	5.0
9	1	3.7	7.0
10	1	4.1	7.5
12	1	4.9	10.1

SIZE	FLANGE	T X W	A	B	C	D	E	REC. ROD	MAX. ROD	MAX. REC. LOAD, LBS.
2	4 to 7	1/4 x 1 1/4	1 1/8	1/2	5/8	5/8	0.840	1/2	3/4	1000
	8 to 12	3/8 x 2	1 3/8							
5	4 to 10	1/2 x 2	2	3/4	7/8	1	1.050	3/4	1	3000
	12	1/2 x 3								



Notes:

- For flange widths greater than 12" use FIG. #695.
- When ordering, flange width and flange thickness may be specified by the AISC W-Shape or S-shape designation, e.g., W8x35.
- Maximum hanger rod-in-plane and out-of-plane rotation resultant ≤ 4° per MSS SP-58. Pipe attachment shall provide rotation.
- Recommended rod size based on maximum load. Maximum rod size based on dimension "C" and FIG. #740 Weldless Eye Nut bail size.