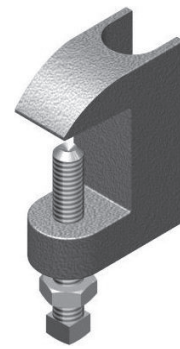
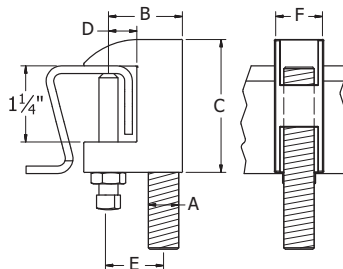




FIG. 640

Wide Top Beam Clamp

- SERVICE:** For use under roof installations with bar joist type construction where the thickness of the joist does not exceed 1 1/4".
- MATERIAL:** Malleable Iron casting
- FINISH:** Black or Electro-Galvanized
- STANDARDS:** MSS SP-58 Type 19
- APPROVALS:** FM 3/8" only, UL 3/8" and 1/2" (1/2" for 4" IPS max)
- ORDERING:** Specify figure number, rod size, and finish.
(Furnished with a hardened cup point set screw and lock nut.)



ROD SIZE "A"	B	C	D	E	F	MAX. PIPE SIZE	WEIGHT EACH, LBS.	MAX. REC. LOAD, LBS.
3/8	1 3/8	2	1/2	1	7/8	4	0.55	400
1/2	1 3/8	2	1/2	1	7/8	4	0.56	500
5/8	1 7/8	2 3/8	5/8	1 3/8	1 1/4	5	0.66	850
3/4	1 7/8	2 3/8	5/8	1 3/8	1 1/4	6	0.83	900