



FIG. 630

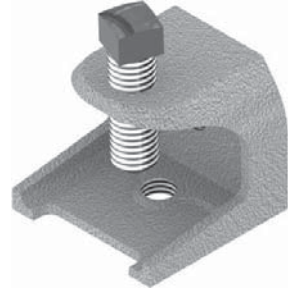
Electrical Beam Clamp

SERVICE: For attaching hanger rod to beam or framework where thickness does not exceed 1/2". Rod tapped on both bottom and back of clamp.

MATERIAL: Malleable Iron

FINISH: Electro-Galvanized

ORDERING: Specify figure number and rod size.



ROD SIZE A	B	C	D	SET SCREW	WEIGHT EACH, LBS.	MAX. REC. LOAD, LBS.
1/4	1 3/16	1 3/8	1 3/8	5/16 - 18	0.26	335
3/8	2 1/16	1 7/8	1 3/4	1/2 - 13	0.70	525
1/2	2 1/2	2 3/8	2 3/16	1/2 - 13	1.26	750

