



**FIG. 600**

**Concrete Insert Box**

**FIG. 605**

**Concrete Insert Nut**

**SERVICE:** Heavy gauge insert box is nailed to concrete form and can accommodate 1/4" to 3/4" rod diameters. When concrete has set, knock out plug can be removed and insert nut installed. Side openings accommodate up to 1/2" reinforcing rods.

**MATERIAL:** Carbon Steel

**FINISH:** Electro-Galvanized

**STANDARDS:** MSS SP-58 Type 18

**ORDERING:** Specify figure number. (FIG. #605 Insert Nut must be ordered separately by rod size.)

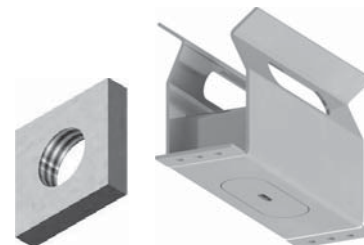


FIG. #605

FIG. #600

FIG. #600						
A	B	C	D	E	WEIGHT EACH, LBS.	MAX. REC. LOAD, LBS.
3 7/8	1 3/4	2 5/8	13/16	2 1/8	0.96	1200

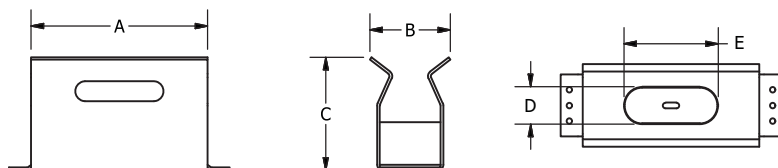


FIG. #605			
ROD SIZE A	B	C	WEIGHT EACH, LBS.
3/8	5/16	1 1/4	0.13
1/2	5/16	1 1/4	0.12
5/8	5/16	1 1/4	0.11
3/4	5/16	1 1/4	0.10

