



FIG. 545

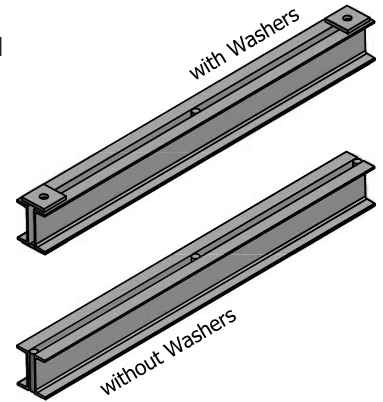
Channel Assembly

SERVICE: To support single and multiple piping services on a common member such as a trapeze suspended by two threaded rods or as supplemental steel attached to the structure. Back-to-back channel assembled with spacers for rod clearance and adjustment. Available with or without washer plates. Washer plates may be welded or loose.

MATERIAL: Carbon Steel meeting ASTM: A36
FINISH: Black or Hot-Dip Galvanized meeting ASTM A123
MAX TEMP: 650°F for Black Carbon Steel
 350°F for Hot-Dip Galvanized Carbon Steel

STANDARDS: MSS SP-58 Type 59, Trapeze

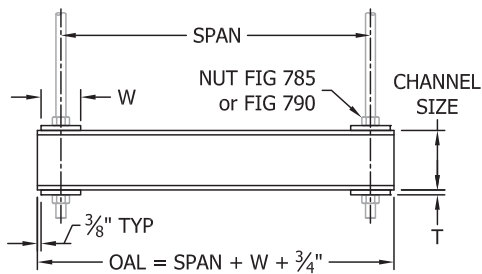
ORDERING: Specify figure number, channel size, overall length (OAL), span, rod size, with washer plates welded (W) or loose (L) or without (N) and finish. (Example: Fig 545-6-76.75-72-1-W-HDG)



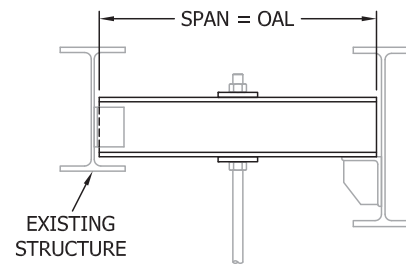
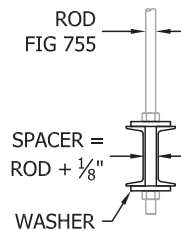
MAXIMUM RECOMMENDED LOAD								
SPAN	C3 x 4.1 8.2 lb/ft	C4 x 5.4 10.8 lb/ft	C5 x 6.7 13.4 lb/ft	C6 x 8.2 16.4 lb/ft	C8 x 11.5 23 lb/ft	C10 x 15.3 30.6 lb/ft	C12 x 20.7 41.4 lb/ft	C15 x 33.9 67.8 lb/ft
36	2900	5100	7900	11600	21700	-	-	-
48	2200	3800	5900	8700	16200	-	-	-
60	1700	3000	4700	6900	13000	21600	-	-
72	1400	2500	3900	5800	10800	18000	-	-
84	1200	2100	3400	4900	9300	15400	24500	-
96	1100	1900	2900	4300	8100	13500	21500	-
108	900	1700	2600	3800	7200	12000	19100	-
120	800	1500	2300	3400	6500	10800	17200	-
132	800	1300	2100	3100	5900	9800	15600	-
144	-	1200	1900	2900	5400	9000	14300	-
156	-	1100	1800	2600	5000	8300	13200	-
168	-	1000	1700	2400	4600	7700	12200	24000
180	-	-	1500	2300	4300	7200	11400	22400
192	-	-	1400	2100	4000	6700	10700	21000
204	-	-	1400	2000	3800	6300	10100	19700
216	-	-	-	1900	3600	6000	9500	18600
228	-	-	-	1800	3400	5600	9000	17600
240	-	-	-	1700	3200	5400	8600	16800

ROD & WASHER SELECTION		
ROD	LOAD	WASHER W x W x T
3/8	730	3 x 3 x 1/4
1/2	1350	3 x 3 x 1/4
5/8	2160	3 x 3 x 3/8
3/4	3230	4 x 4 x 3/8
7/8	4480	4 x 4 x 1/2
1	5900	4 x 4 x 1/2
1 1/8	7420	4 x 4 x 1/2
1 1/4	9500	4 x 4 x 1/2
1 3/8	11290	5 x 5 x 3/4
1 1/2	13800	5 x 5 x 3/4
1 3/4	18600	5 x 5 x 3/4
2	24600	5 x 5 x 3/4

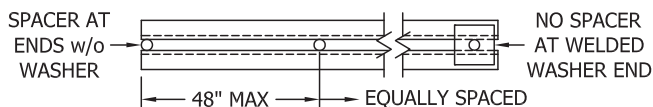
See Note 2



TRAPEZE HANGER



SUPPLEMENTAL STEEL



QTY (1) SPACER @ MID-SPAN 49" to 96"
 QTY (2) SPACERS for SPANS 97" to 144"
 QTY (3) SPACERS for SPANS 145" to 192"
 QTY (4) SPACERS for SPANS 193" to 240"

NOTES:

1. Load based on simply supported beam with a concentrated load at mid-span. All deflections at mid-span less than Span/360.
2. Each rod size may be based on one half the maximum recommended load for symmetrically loaded channel assemblies. For varying load distributions, each rod size is recommended to be based on the full load unless calculations have been performed.
3. Welding in accordance with AWS D1.1.
4. Interior spacers partially welded for field removal if necessary.
5. For special designs contact factory with dimensions, material, loading, finish, and additional design criteria.