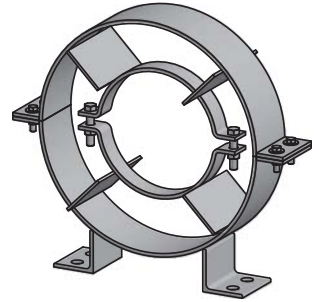




FIG. 502

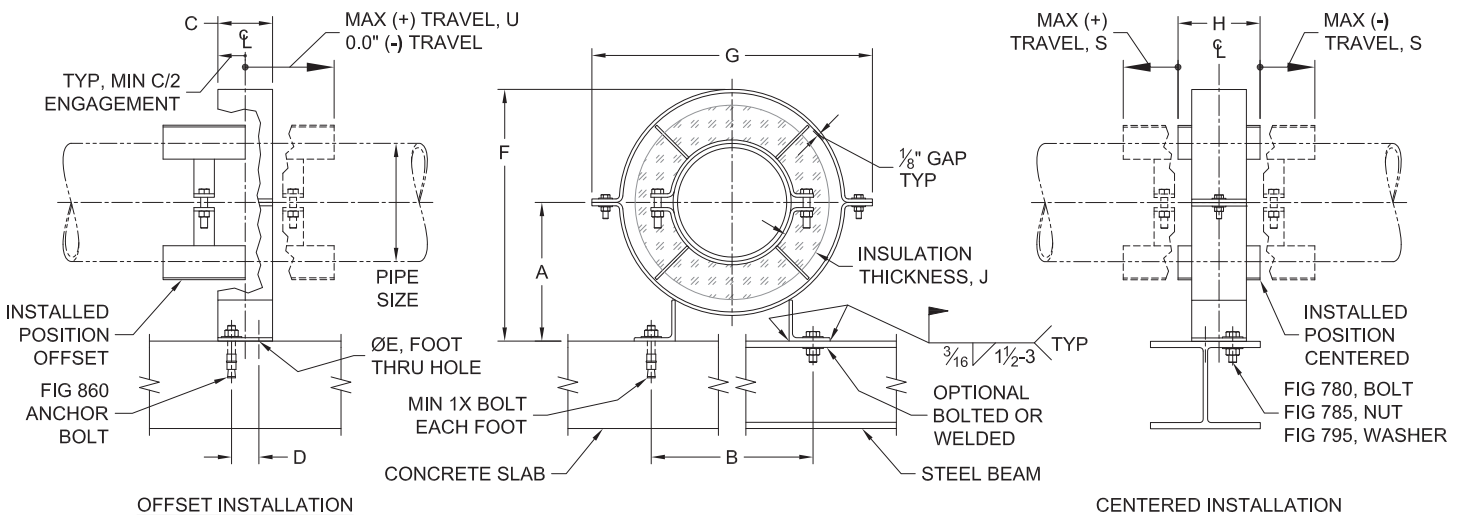
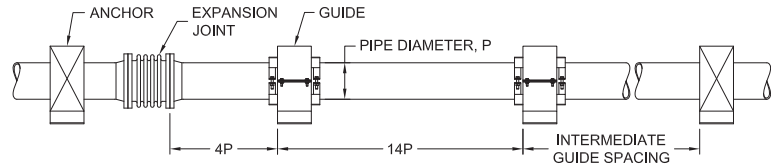
Light Duty Pipe Alignment Guide



- SERVICE:** To provide axial pipe alignment near an expansion joint for horizontal and vertical runs. Attached to steel beams by bolting or welding, and concrete slabs by anchor bolting.
- MATERIAL:** Carbon Steel meeting ASTM: A36, A307 Gr A and A563 Gr A
Stainless Steel Type 304 and 316 meeting ASTM: A240, F593 and F594
- FINISH:** Black or Hot-Dip Galvanized meeting ASTM: A153
- MAX TEMP:** 650°F for Black Carbon Steel and Stainless Steel
350°F for Hot-Dip Galvanized Carbon Steel
- ORDERING:** Specify figure number, size number, pipe size, insulation thickness, material and finish. (Order installation hardware separately.)

GUIDE SIZE SELECTION TABLE								
PIPE SIZE	NOMINAL INSULATION THICKNESS, J							
	0	1	1½	2	2½	3	4	5
½-1	1	1	1	2	3	3	4	5
1¼	1	1	2	3	3	4	4	5
1½-2	1	1	2	3	3	4	5	6
2½	2	2	3	3	4	4	5	6
3	2	2	3	3	4	4	5	7
3½-4	3	3	3	4	4	5	6	7
5	4	4	4	4	5	5	7	8
6	4	4	4	5	5	6	7	8
8	6	6	6	6	7	7	8	9
10	8	8	8	8	8	8	9	10
12	9	9	9	9	9	9	10	10
14	10	10	10	10	10	10	10	-
16	10	10	10	10	10	10	-	-

GUIDE DIMENSIONS									
SIZE NO.	A	B	C	D	E	F	G	H	WEIGHT EACH, LBS.
1	4	5 ³ / ₈	3	1½	9 ¹ / ₁₆	7 ¹ / ₁₆	9½	4	9.7
2	4½	5¾	3	1½	9 ¹ / ₁₆	8 ¹ / ₈	11¼	4	12.1
3	6	7	3	1½	9 ¹ / ₁₆	10 ⁹ / ₁₆	12¾	4	15.0
4	7½	8 ⁵ / ₁₆	3	1½	9 ¹ / ₁₆	13 ³ / ₁₆	15½	4	19.7
5	8½	8¾	4	2	11 ¹ / ₁₆	15¼	17½	4	25.6
6	9¼	11 ¹¹ / ₁₆	4	2	13 ¹ / ₁₆	16 ⁷ / ₈	19¼	4	35.6
7	10 ¹ / ₈	12	4	2	13 ¹ / ₁₆	18¾	20½	4	36.3
8	11	13¾	6	4	13 ¹ / ₁₆	20¼	22½	6	52.1
9	12	13 ⁹ / ₁₆	6	4	15 ¹ / ₁₆	22¼	24½	6	62.1
10	13¾	15¼	6	4	15 ¹ / ₁₆	26	28½	6	81.1



- NOTES:**
1. Welding in accordance with AWS D1.1 for carbon steel and AWS D1.6 for stainless steel.
 2. Not to be used as a gravity support.
 3. Guide spacing in accordance with Expansion Joint Manufacturers Association (EJMA) Standards.
 4. If larger travel required, see FIG. #500.
 5. Shell ears may be rotated for closely spaced adjacent pipe runs, G' ≈ G - 4 in.

ALLOWABLE TRAVEL		
SIZE NO.	U	S
1-7	+4	±2
8-10	+6	±3