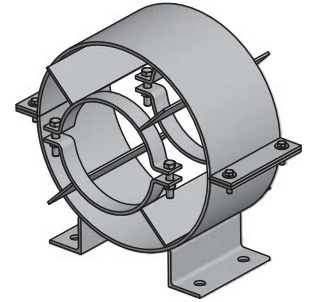




FIG. 500

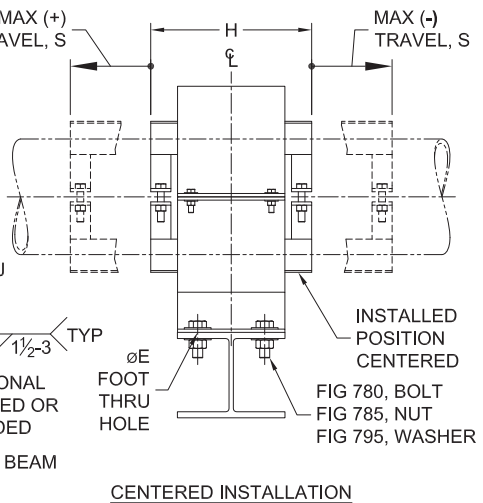
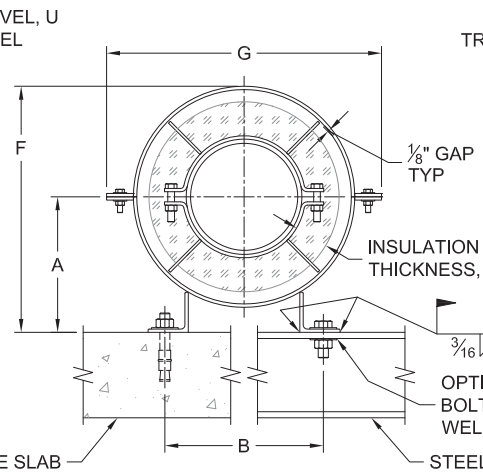
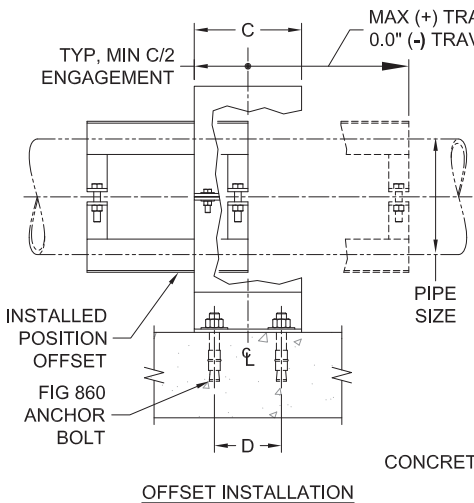
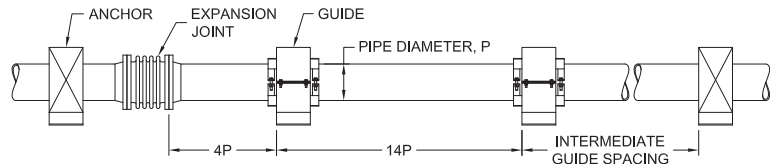
Pipe Alignment Guide



- SERVICE:** To provide axial pipe alignment near an expansion joint for horizontal and vertical runs. Attached to steel beams by bolting or welding, and concrete slabs by anchor bolting.
- MATERIAL:** Carbon Steel meeting ASTM: A36, A307 Gr A and A563 Gr A
Stainless Steel Type 304 and 316 meeting ASTM: A240, F593 and F594
- FINISH:** Black or Hot-Dip Galvanized meeting ASTM: A153
- MAX TEMP:** 650°F for Black Carbon Steel and Stainless Steel
350°F for Hot-Dip Galvanized Carbon Steel
- ORDERING:** Specify figure number, size number, pipe size, insulation thickness, material and finish. (Order installation hardware separately.)

GUIDE SIZE SELECTION TABLE								
PIPE SIZE	NOMINAL INSULATION THICKNESS, J							
	0	1	1½	2	2½	3	4	5
½-1	1	1	1	2	3	3	4	5
1¼	1	1	2	3	3	4	4	5
1½-2	1	1	2	3	3	4	5	6
2½	2	2	3	3	4	4	5	6
3	2	2	3	3	4	4	5	7
3½-4	3	3	3	4	4	5	6	7
5	4	4	4	4	5	5	7	8
6	4	4	4	5	5	6	7	8
8	6	6	6	6	7	7	8	9
10	8	8	8	8	8	8	9	10
12	9	9	9	9	9	9	10	10
14	10	10	10	10	10	10	10	11
16	10	10	10	10	10	10	11	12
18	11	11	11	11	11	11	12	12
20	12	12	12	12	12	12	12	13
24	13	13	13	13	13	13	13	13

GUIDE DIMENSIONS									
SIZE NO.	A	B	C	D	E	F	G	H	WEIGHT EACH, LBS.
1	4	5 ³ / ₈	4	2½	9 ¹ / ₁₆	7 ¹ / ₁₆	9½	8	14.3
2	4½	5¾	4	2½	9 ¹ / ₁₆	8 ¹ / ₈	11¼	8	17.9
3	6	7	6	4	9 ¹ / ₁₆	10 ⁹ / ₁₆	12¾	10	29.6
4	7½	8 ⁵ / ₁₆	6	4	11 ¹ / ₁₆	13 ³ / ₁₆	15½	10	38.8
5	8½	8¾	8	5	11 ¹ / ₁₆	15¼	17½	12	52.5
6	9¼	11 ¹¹ / ₁₆	8	5	13 ¹ / ₁₆	16 ⁷ / ₈	19¼	12	65.7
7	10 ¹ / ₈	12	8	5	13 ¹ / ₁₆	18¾	20½	12	67.3
8	11	13¼	8	5	13 ¹ / ₁₆	20¼	22½	12	78.4
9	12	13 ⁹ / ₁₆	8	5	15 ¹ / ₁₆	22¼	24½	12	93.8
10	13¾	15¼	8	5	15 ¹ / ₁₆	26	28½	12	129.2
11	14¾	15¾	8	5	15 ¹ / ₁₆	28	30	12	136.7
12	16¼	18¾	8	5	1 ¹ / ₈	31½	34	12	152.5
13	18¼	19½	8	5	1 ¹ / ₈	35½	39½	12	173.2



- NOTES:**
1. Welding in accordance with AWS D1.1 for carbon steel and AWS D1.6 for stainless steel.
 2. Not to be used as a gravity support.
 3. Guide spacing in accordance with Expansion Joint Manufacturers Association (EJMA) Standards.
 4. If larger travel required, contact factory.
 5. Shell ears may be rotated for closely spaced adjacent pipe runs, G' ≈ G - 4 in.

ALLOWABLE TRAVEL		
SIZE NO.	U	S
1-2	+8	±4
3-4	+10	±5
5-13	+12	±6