



FIG. 450
FIG. 455

Socket Clamp for DI Pipe

Socket Clamp Washer

SERVICE: Designed to prevent the separation of DI pipe joints.
MATERIAL: Carbon Steel or 304/316 Stainless Steel
FINISH: Black, Electro-Galvanized or Hot-Dip Galvanized
ORDERING: Specify figure number, pipe size, material and finish. (Two FIG. #455 washers are required for each clamp and must be ordered separately. If tie rod is larger than 3/4", FIG. #455 square plate is used.)

FIG. #450							
DI PIPE SIZE	I.D.	ROD SIZE A	D	L	STOCK SIZE S	WEIGHT EACH, LBS.	
						WASHER	CLAMP
3	3.96	3/4	5/8	12	3/8 x 2	0.79	5.95
4	4.80	3/4	5/8	12 3/4	1/2 x 2	0.79	8.00
6	6.90	3/4	5/8	15 1/2	1/2 x 2	0.79	10.00
8	9.05	3/4	5/8	17 1/2	1/2 x 2	0.79	12.10
10	11.10	3/4	5/8	19 1/2	1/2 x 2	0.79	13.63
12	13.20	3/4	5/8	22	1/2 x 2	0.79	15.65
14	15.30	1	7/8	28 1/2	3/4 x 3	2.80	45.00
16	17.40	1 1/8	1	30 3/4	3/4 x 4	2.80	63.00
18	19.50	1 1/4	1 1/4	34 5/8	3/4 x 4	2.80	76.00
20	21.60	1 3/8	1 1/4	37 1/2	3/4 x 5	2.80	100.05
24	25.80	1 1/2	1 1/2	43	3/4 x 5	2.80	119.50
30	32.00	1 1/2	1 1/2	49 1/2	3/4 x 5	2.80	140.50
36	38.30	1 1/2	1 1/2	56 1/2	3/4 x 5	2.80	164.50

FIG. #455			
PIPE SIZE	TIE ROD SIZE	STOCK SIZE	WEIGHT EACH, LBS.
3	3/4	Cast Iron	0.79
4	3/4	Cast Iron	0.79
6	3/4	Cast Iron	0.79
8	3/4	Cast Iron	0.79
10	3/4	Cast Iron	0.79
12	3/4	Cast Iron	0.79
14	1	5/8 x 4 x 4	2.80
16	1 1/8	5/8 x 4 x 4	2.80
18	1 1/4	5/8 x 4 x 4	2.80
20	1 3/8	5/8 x 4 x 4	2.80
24	1 1/2	5/8 x 4 x 4	2.80
30	1 1/2	5/8 x 4 x 4	2.80
36	1 1/2	5/8 x 4 x 4	2.80

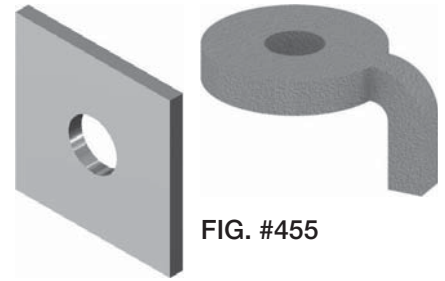
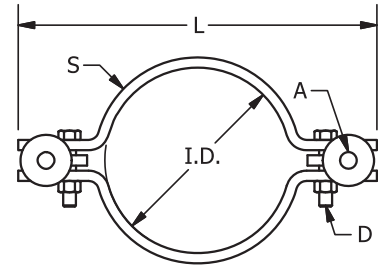


FIG. #455