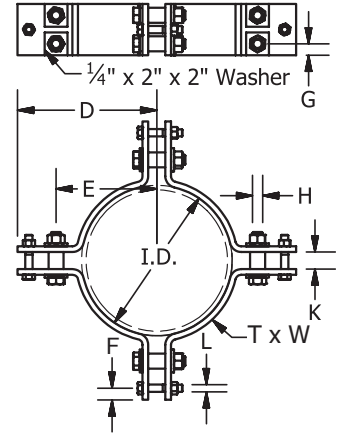
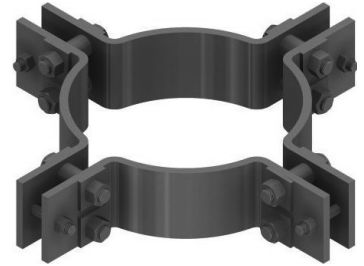




FIG. 440

Four Section Rodding Band

- SERVICE:** For avoiding the possibility of joints blowing out on high pressure cast iron water mains. Made to the City of New York or the New York Port Authority specifications. Four FIG. #465 Square Washer plates for the tie rod must be ordered separately.
- MATERIAL:** Carbon Steel (ASTM A36) or Stainless Steel (ASTM A240, Types 304 and 316)
- FINISH:** Black or Hot-Dip Galvanized (ASTM A123) with Electro-Galvanized hardware
- ORDERING:** Specify figure number, pipe size, material and finish.



DI PIPE SIZE	I.D.	T x W	D	E	F	G	H	K	L	TIE ROD SIZE
4	4.8	3/8 x 3	7 1/2	4 3/8	1	1 1/2	7/8	1 1/4	5/8	3/4
6	6.9	3/8 x 3	8 1/2	5 3/8	1	1 1/2	7/8	1 1/4	5/8	3/4
8	9.05	1/2 x 4	9	6 3/8	1	1	7/8	1 1/4	5/8	3/4
10	11.1	1/2 x 5	10 5/8	7 5/8	1	1	7/8	1 1/2	5/8	1
12	13.2	1/2 x 5	12 1/4	8 7/8	1	1	7/8	1 1/2	5/8	1
14	15.3	1/2 x 5	13 3/16	9 13/16	1	1	7/8	1 1/2	5/8	1
16	17.4	1/2 x 5	14 1/4	10 7/8	1	1	7/8	1 1/2	5/8	1
18	19.5	1/2 x 6	15 3/8	12	1	1 1/4	7/8	1 1/2	5/8	1
20	21.6	1/2 x 6	16 3/8	13	1	1 1/4	7/8	1 1/2	5/8	1
24	25.8	1/2 x 6	19	15 1/4	1	1 1/4	7/8	1 7/8	5/8	1 3/8
30	32	5/8 x 6	23	18 3/4	1	1 1/4	7/8	2 1/4	5/8	1 3/4
36	38.3	3/4 x 8	26 1/4	22	1	1 1/2	7/8	2 1/4	5/8	1 3/4