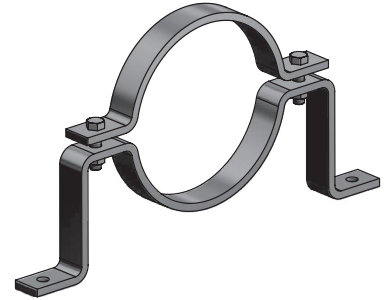




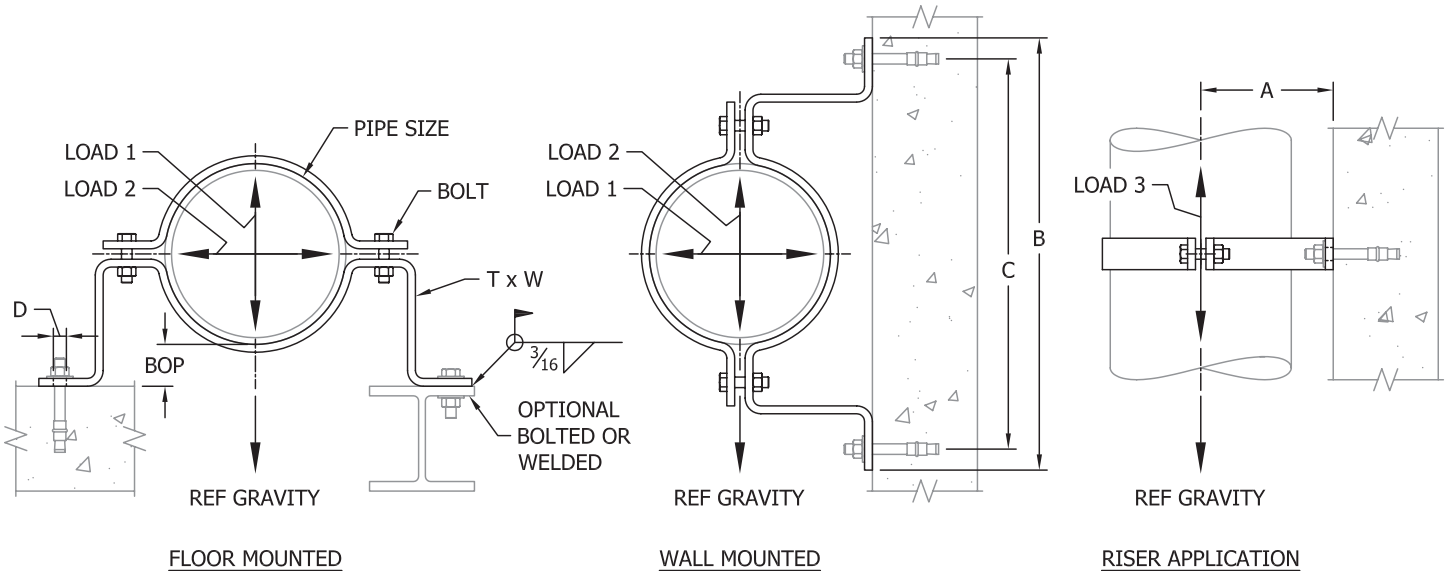
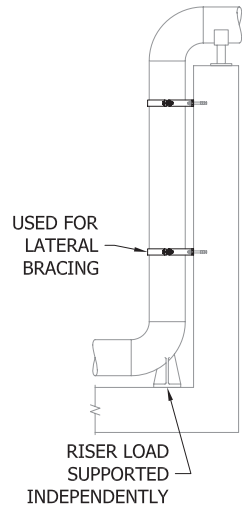
**FIG. 430**

**Offset Pipe Clamp**

- SERVICE:** To support horizontal piping from floors and walls. To provide lateral bracing to vertical piping. May be used as a riser support for pipe size up to 3”.
- MATERIAL:** Carbon Steel (ASTM A36) or Stainless Steel (ASTM A240, Type 304)
- FINISH:** Hot-Dip Galvanized (ASTM A123) with Electro-Galvanized hardware
- MAX TEMP:** 650°F for Black Carbon Steel and Stainless Steel  
350°F for Electro-Galvanized and Hot-Dip Galvanized Carbon Steel.
- ORDERING:** Specify figure number, pipe size, material and finish. (Order installation hardware separately.)



PIPE SIZE	T x W	BOLT	BOP	A	B	C	D	WEIGHT EACH, LBS.	LOAD 1	LOAD 2	LOAD 3
2	¼ x 1¼	⅜	2	3⅞	10⅞	9⅞	7/16	2.05	410	200	100
2½	¼ x 1¼	⅜	2	3⅞	12	10½	7/16	2.39	410	200	150
3	¼ x 1¼	⅜	2	3¾	12⅞	11⅞	7/16	2.57	410	200	175
4	¼ x 1½	½	2	4¼	14½	12½	9/16	3.64	600	250	N/A
6	⅜ x 1½	½	2	5⅞	18½	16½	9/16	6.91	850	350	N/A
8	⅜ x 1½	½	2	6⅞	20⅞	18⅞	9/16	8.19	850	350	N/A
10	⅝ x 3	¾	2⅞	7¾	25	23	13/16	20.03	900	400	N/A
12	⅝ x 3	¾	2⅞	8¾	27	25	13/16	23.24	900	400	N/A



- NOTES:**
1. Stocked in Nominal Pipe Sizes (NPS). Ductile iron, cast iron and other pipe types available upon request. Provide pipe standard and/or outside diameter.
  2. Special "A" dimension available upon request. Allowable loads above do not apply to specials.

BOLT TORQUE	
ft • lbs	
⅜	20
½	50
¾	75