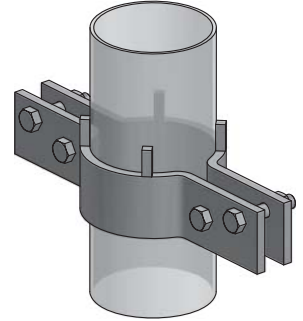




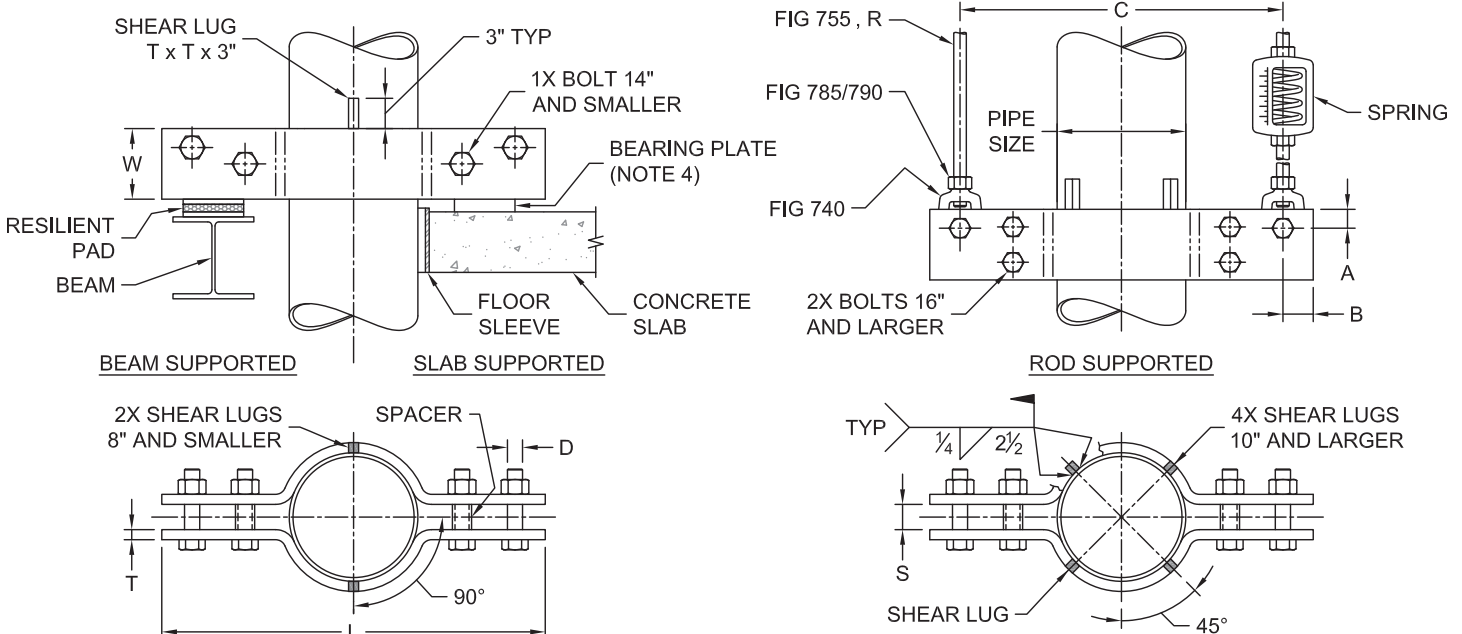
**FIG. 404**

# Heavy Duty Riser Clamp



- SERVICE:** To support vertical piping from hanger rods or structural members such as beams and concrete slabs. Shear lugs field welded to pipe wall transfer pipe load to riser clamp.
- MATERIAL:** Carbon Steel meeting ASTM: A36, A500 Gr B, A307 Gr A and A563 Gr A  
Stainless Steel Type 304 and 316 meeting ASTM: A240, A312, F593 and F594
- FINISH:** Black or Hot-Dip Galvanized meeting ASTM A123
- MAX TEMP:** 650°F for Black Carbon Steel and Stainless Steel  
350°F for Hot-Dip Galvanized Carbon Steel
- STANDARDS:** MSS SP-58 Type 42
- ORDERING:** Specify figure number, pipe size, material and finish. (Order installation hardware separately.)

PIPE SIZE	T x W	A	B	C	D	L	S	R	WEIGHT EACH, LBS.	MAX. REC. LOAD, LBS.
2	1/2 x 2 1/2	1 1/4	2	18	1/2	22	3/4	1/2	16.00	900
2 1/2	1/2 x 2 1/2	1 1/4	2	20	1/2	24	3/4	1/2	18.00	900
3	5/8 x 3	1 1/4	2	20	5/8	24	1	5/8	27.30	1500
4	3/4 x 4	1 1/4	2	22	3/4	26	1 1/4	3/4	46.70	2200
5	3/4 x 4	1 1/4	2	22	3/4	26	1 1/4	3/4	47.40	2200
6	3/4 x 5	1 1/4	2	24	7/8	28	1 1/2	3/4	66.00	3000
8	3/4 x 5	1 1/4	2	27	7/8	31	1 1/2	3/4	74.00	3000
10	1 x 6	1 5/8	3	30	1 1/4	36	2 1/4	1	141.00	5500
12	1 x 7	1 7/8	3	32	1 1/2	38	2 1/2	1 1/4	185.00	7800
14	1 x 7	1 7/8	3	34	1 1/2	40	2 1/2	1 1/4	195.00	7800
16	1 1/4 x 8	2	3	36	1 1/2	42	2 1/2	1 1/4	283.00	9000
18	1 1/4 x 8	2	3	39	1 1/2	45	2 1/2	1 1/4	302.00	9000
20	1 1/4 x 8	2 5/8	4 1/4	42	2	50 1/2	3 1/2	1 1/2	364.48	13500
24	1 1/4 x 8	2 5/8	4 1/4	45	2	53 1/2	3 1/2	1 1/2	391.00	13500



- Notes:**
- Maximum recommended load on rigid support. Loads may be doubled when used with springs or other resilient devices.
  - Welding in accordance with AWS D1.1 for carbon steel and AWS D1.6 for stainless steel.
  - Local pipe wall stress due to welded shear lug attachment evaluation available upon request, provide: pipe material, pipe wall thickness, operating pressure and temperature, and corrosion allowance.
  - Concrete bearing plate as necessary by others.
  - For special designs, contact factory with pipe size, material, load, operating temperature, C and L dimensions, finish and support type.