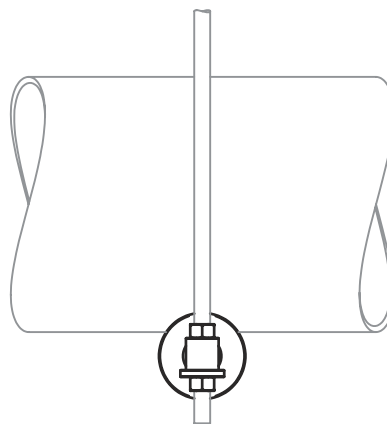
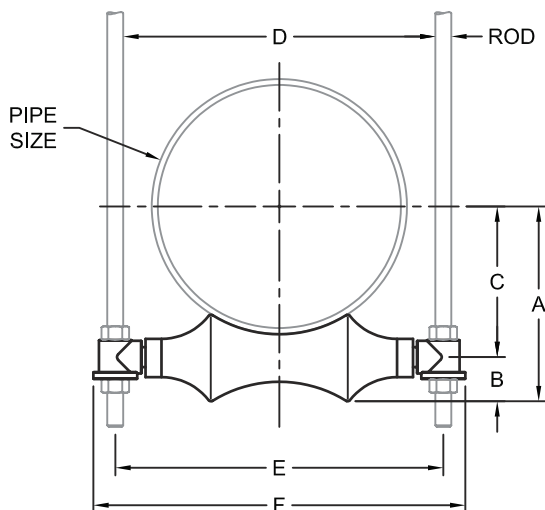
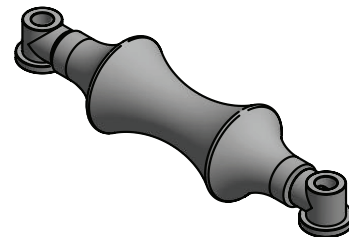


**FIG. 260****Adjustable Two Rod Roller Hanger**

- SERVICE:** To support pipe while providing large axial movement. Hung from structure by two rods. Provides vertical adjustment during installation.
- MATERIAL:** Carbon Steel (ASTM A36) axle with Gray Cast Iron (ASTM A48, Grade 30) roll and socket ends. Stainless Steel (ASTM A240, Types 304 and 316) axle with Cast (ASTM 351, Grade CF8 and CF8M) roll and socket ends.
- FINISH:** Hot-Dip Galvanized (ASTM A123) roll and socket ends with Electro-Galvanized (ASTM B633) axle.
- MAX TEMP:** 350°F for Hot-Dip Galvanized, 1000°F for Stainless Steel¹
- STANDARDS:** MSS SP-58 Type 41
- ORDERING:** Specify figure number, pipe size and material. (Order hanger hardware separately.)



PIPE SIZE	ROD	A	B	C	D	E	F	WEIGHT EACH, LBS.	MAX. REC. LOAD, LBS.
3	1/2	2 7/8	3/4	2 1/8	5	5 1/2	6 7/8	1.2	700
4	1/2	3 3/4	15/16	2 13/16	6 1/4	6 3/4	8 1/8	1.7	750
5	5/8	5	1 7/8	3 3/8	7 7/16	8 1/16	9 11/16	2.4	750
6	3/4	5 9/16	1 7/8	3 15/16	8 13/16	9 9/16	11 3/8	4.3	1070
7	3/4	6 1/8	1 7/8	4 1/2	10	10 3/4	12 9/16	4.6	1100
8	7/8	7 3/16	2	5 3/16	11 1/8	11 15/16	14 1/16	6.5	1350
10	7/8	8 1/4	2	6 1/4	13 3/16	14 1/16	16 3/16	7.9	1730
12	7/8	9 1/2	2 1/16	7 7/16	15 7/16	16 5/16	18 7/16	12	2400
14	1	10 3/4	2 3/8	8 3/8	16 3/4	17 3/4	20 1/2	19	3130
16	1	12 3/16	2 3/4	9 7/16	19 9/16	20 9/16	23 3/16	24	3970
18	1	13	2 11/16	10 5/16	20 7/8	21 7/8	24 5/8	26	4200
20	1 1/4	14 3/8	3	11 3/8	23	24 1/4	27	30	4550
24	1 1/2	17 1/2	3 5/8	13 7/8	27 1/8	28 5/8	31 7/8	56	6160
30	1 1/2	21 11/16	4 7/16	17 7/8	34	35 1/2	39 1/4	93	7290

D.I./C.I. PIPE SIZE	FIG 260 SIZE
3	4
4	5
6	6
8	8
10	10
12	14
14	16
16	18
18	20
20	24
24	30
30	N/A

SS LOAD CORRECTION ¹	
TEMP °F	FACTOR
100	1.00
200	0.80
400	0.67
600	0.59
800	0.54
1000	0.50

Notes:

- Maximum Recommended Loads above for carbon steel/cast iron. For recommended loads on stainless steel roller chairs, multiply the above loads by the load/temperature correction factor.
- For insulated lines with Pipe Covering Protection Saddles see FIG. #310 to #350 for size selection.
- For pre-insulated lines see MaxSpan RH in Pre-Insulated Pipe Support Catalog for size selection.