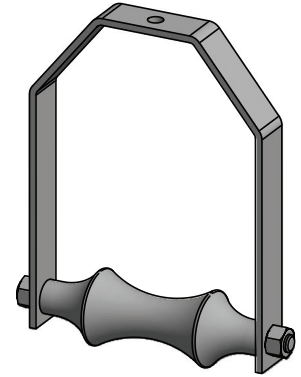


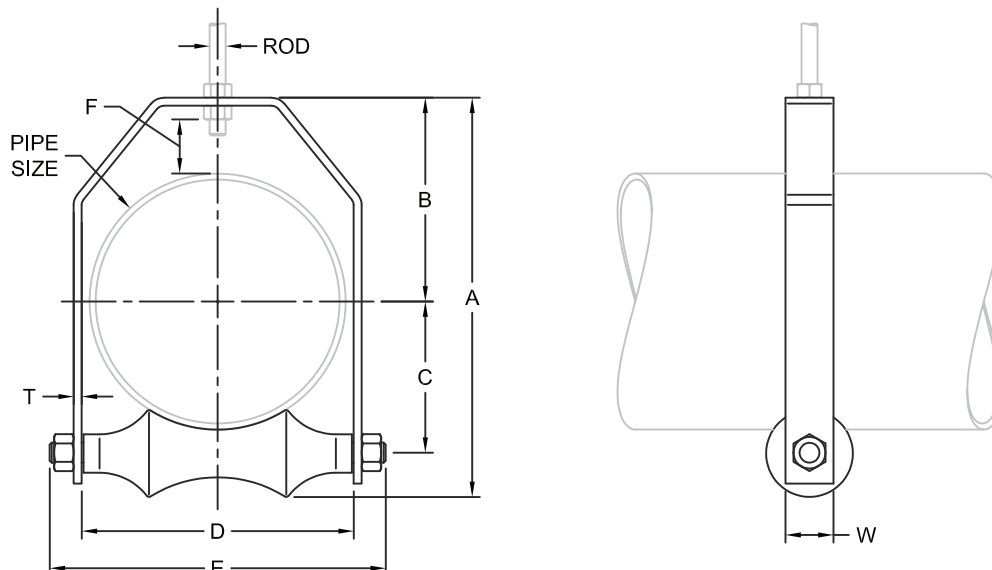


**FIG. 250**

## Adjustable Single Rod Roller Hanger



- SERVICE:** To support pipe while providing large axial movement. To be hung from structure by a single rod. Provides vertical adjustment during installation.
- MATERIAL:** Carbon Steel yoke meeting ASTM A36 with gray cast iron roll meeting ASTM A48 Grade 30. Stainless Steel yoke meeting ASTM A240 with cast roll meeting ASTM 351, Types 304 and 316.
- FINISH:** Black, Electro-Galvanized meeting ASTM B633 or Hot-Dip Galvanized meeting ASTM A123
- MAX TEMP:** 400°F for Black Carbon Steel  
350°F for Hot-Dip Galvanized Carbon Steel  
1000°F for 304 and 316 Stainless Steel
- STANDARDS:** MSS SP-58 Type 43
- ORDERING:** Specify figure number, pipe size, material and finish. (Order hardware separately.)



PIPE SIZE	ROD	A	B	C	D	E	ADJ	T x W	WEIGHT EACH, LBS.	MAX. REC. LOAD, LBS.
3	1/2	7 5/16	4 3/8	2 1/8	3 15/16	5 5/16	1 11/16	1/4 x 1 1/2	2.5	310
4	5/8	8 7/16	4 3/4	2 13/16	5	6 5/16	1 7/16	1/4 x 1 1/2	3.2	475
5	5/8	9 11/16	5 5/16	3 3/8	6	7 15/16	1 7/16	1/4 x 2	4.9	685
6	3/4	11 3/8	6 1/4	3 15/16	7 1/8	9	1 3/4	1/4 x 2	6.3	780
7	3/4	12 1/2	6 11/16	4 1/2	8 1/4	10 1/2	1 11/16	1/4 x 2	7.0	780
8	7/8	14	7 3/8	5 3/16	9 1/8	11 7/8	1 11/16	3/8 x 2	12	780
10	7/8	17 3/8	9 7/16	6 1/4	11 5/16	14 1/4	2 9/16	1/2 x 2	17	965
12	7/8	19 3/8	10 11/16	7 1/16	13 3/16	16 1/4	2 3/16	1/2 x 2	22	965
14	1	22 7/8	12 11/16	8 3/8	14 1/2	18	3 1/2	1/2 x 2 1/2	33	1200
16	1	24 15/16	12 3/4	9 7/16	17	21	3 1/8	1/2 x 3	45	1200
18	1	27 1/4	14 1/4	10 3/16	18 3/8	22 7/8	3 11/16	1/2 x 3	48	1400
20	1 1/4	29 3/8	14 15/16	11 3/8	20 1/2	25 1/4	3	5/8 x 3	63	1600
24	1 1/4	33 11/16	16 1/8	13 3/8	24 5/16	30	2 1/16	3/4 x 4	112	1800

D.I./C.I. PIPE SIZE	FIG 250 SIZE
3	4
4	5
6	6
8	8
10	10
12	14
14	16
16	18
18	20
20	24

SS LOAD CORRECTION <sup>1</sup>	
TEMP °F	FACTOR
100	1.00
200	0.80
400	0.67
600	0.59
800	0.54
1000	0.50

**Notes:**

- Maximum Recommended Loads above for carbon steel/cast iron to 400°F. For recommended loads on stainless steel roller chairs, multiply the above loads by the load/temperature correction factor.
- For insulated lines with Pipe Covering Protection Saddles see FIG. #310 to #350 for size selection.
- For pre-insulated lines see MaxSpan RH in Pre-Insulated Pipe Support Catalog for size selection.