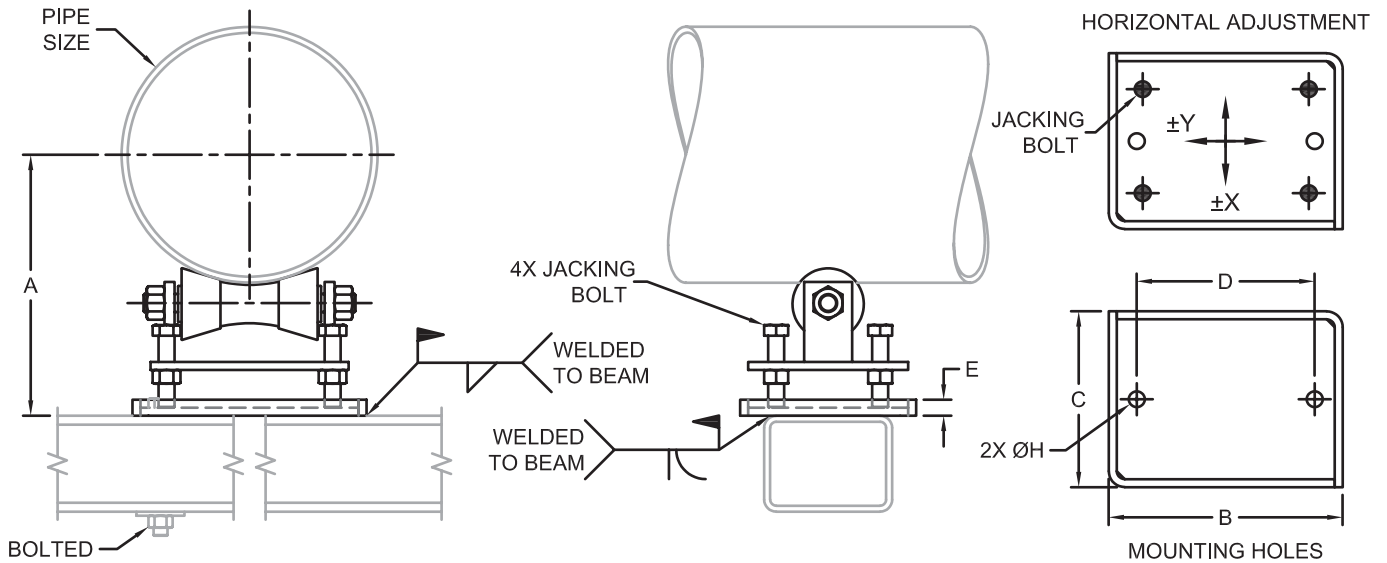
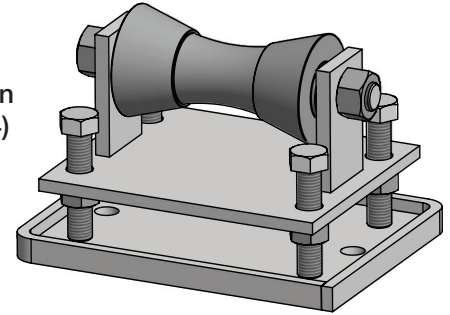




FIG. 249

Adjustable Pipe Roller Stand

- SERVICE:** To support pipe while providing large axial movement. Provides vertical and horizontal adjustment during installation. Bolted or welded to structure.
- MATERIAL:** Carbon Steel (ASTM A36) base, stand and axle with Gray Cast Iron (ASTM A48, Grade 30) roll. Stainless Steel (ASTM A240, Type 304) base, stand and axle with Cast (ASTM 351, Grade CF8) roll.
- FINISH:** Black stand and roll with Electro-Galvanized (ASTM B633) axle and hardware; or Hot-Dip Galvanized (ASTM A123) base, stand and roll with Electro-Galvanized (ASTM B633) axle and hardware.
- MAX TEMP:** 350°F for Hot-Dip Galvanized, 400°F for Black, 1000°F for Stainless Steel²
- STANDARDS:** MSS SP-58 Type 46
- ORDERING:** Specify figure number, pipe size, material and finish. (Order mounting hardware separately.)



PIPE SIZE	A MIN	A MAX	B	C	D	E	ØH	±X	±Y	WEIGHT EACH, LBS.	MAX. REC. LOAD, LBS.
2	4 ³ / ₄	5 ⁵ / ₈	6 ⁷ / ₈	6 ¹ / ₂	3 ⁷ / ₈	1	1	7 ⁷ / ₈	1 ¹ / ₂	11	390
2 ¹ / ₂	5	5 ⁷ / ₈	6 ⁷ / ₈	6 ¹ / ₂	3 ⁷ / ₈	1	1	7 ⁷ / ₈	1 ¹ / ₂	11	390
3	5 ⁵ / ₁₆	6 ³ / ₁₆	6 ⁷ / ₈	6 ¹ / ₂	3 ⁷ / ₈	1	1	7 ⁷ / ₈	1 ¹ / ₂	11	390
3 ¹ / ₂	5 ⁵ / ₁₆	6 ⁷ / ₁₆	6 ⁷ / ₈	6 ¹ / ₂	3 ⁷ / ₈	1	1	7 ⁷ / ₈	1 ¹ / ₂	11	390
4	6 ³ / ₁₆	7 ¹ / ₁₆	8 ¹ / ₂	6	5 ¹ / ₈	1	1	1	1 ¹ / ₈	13	950
5	6 ³ / ₄	8	8 ¹ / ₂	6	5 ¹ / ₈	1	1	1	1 ¹ / ₈	13	950
6	7 ¹ / ₄	8 ¹ / ₂	8 ¹ / ₂	6	5 ¹ / ₈	1	1	1	1 ¹ / ₈	13	950
8	10 ¹ / ₈	11 ¹¹ / ₁₆	10 ¹ / ₂	7 ¹ / ₂	7 ³ / ₈	1	1	1 ³ / ₁₆	3 ³ / ₈	29	2100
10	11 ³ / ₁₆	12 ³ / ₄	10 ¹ / ₂	7 ¹ / ₂	7 ³ / ₈	1	1	1 ³ / ₁₆	3 ³ / ₈	29	2100
12	12 ³ / ₄	14 ¹ / ₈	12 ¹ / ₂	8 ¹ / ₂	9 ¹ / ₂	1	1	1 ¹ / ₁₆	5 ⁵ / ₁₆	40	3075
14	13 ³ / ₈	14 ³ / ₄	12 ¹ / ₂	8 ¹ / ₂	9 ¹ / ₂	1	1	1 ¹ / ₁₆	5 ⁵ / ₁₆	40	3075
16	15 ³ / ₈	17 ¹ / ₄	14 ⁵ / ₈	11	11 ¹ / ₈	1	1	3 ³ / ₄	1	64	4980
18	16 ³ / ₈	18 ¹ / ₄	14 ⁵ / ₈	11	11 ¹ / ₈	1	1	3 ³ / ₄	1	64	4980
20	17 ³ / ₈	19 ¹ / ₄	14 ⁵ / ₈	11	11 ¹ / ₈	1	1	3 ³ / ₄	1	64	4980
24	19 ¹ / ₄	21 ¹ / ₄	15 ³ / ₄	11	12 ¹ / ₄	1	1	3 ³ / ₄	1	71	6100
30	24 ⁷ / ₁₆	26 ¹¹ / ₁₆	19 ¹ / ₂	10 ³ / ₄	15 ³ / ₄	1 ¹ / ₂	1	1 ¹ / ₈	3 ³ / ₁₆	125	7500
36	28 ¹³ / ₁₆	30 ¹³ / ₁₆	23	12 ³ / ₄	19	2	1 ¹ / ₈	1 ⁵ / ₁₆	3 ³ / ₈	215	12000
42	31 ¹⁵ / ₁₆	33 ¹⁵ / ₁₆	23	12 ³ / ₄	19	2	1 ¹ / ₈	1 ⁵ / ₁₆	3 ³ / ₈	215	12000

D.I./C.I. PIPE SIZE	FIG 249 SIZE
3	4
4	5
6	6
8	8
10	10
12	14
14	16
16	18
18	20
20	24
24	30
30	36
36	36
42	42

SS LOAD CORRECTION	
TEMP °F	FACTOR
100	1.00
200	0.80
400	0.67
600	0.59
800	0.54
1000	0.50

- Notes:
1. For fixed height see FIG. #248 Pipe Roller Stand.
 2. Maximum Recommended Loads above for carbon steel/cast iron to 400°F. For recommended loads on stainless steel roller stands, multiply the above loads by the load/temperature correction factor.
 3. Pipe sizes 36" and 42" not available in stainless steel.
 4. Dimension "A" may vary for stainless steel.