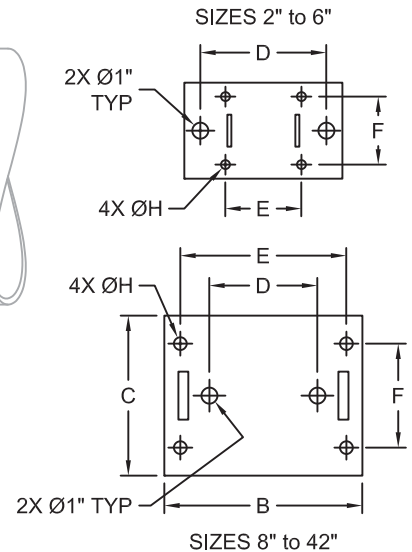
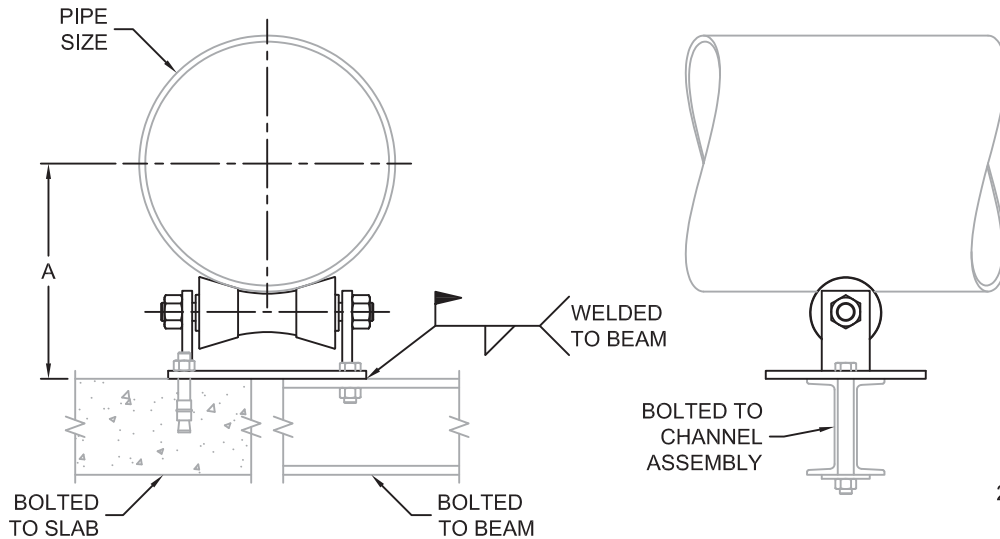
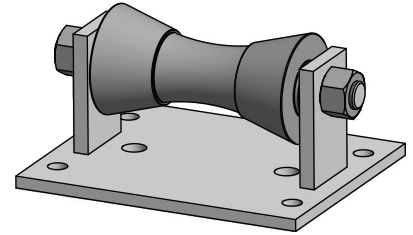




FIG. 248

Pipe Roller Stand

- SERVICE:** To support pipe while providing large axial movement. To be bolted or welded to structure.
- MATERIAL:** Carbon Steel body meeting ASTM A36 with gray cast iron roll meeting ASTM A48 Grade 30. Stainless Steel body meeting ASTM A240 with cast roll meeting ASTM 351, Types 304 and 316.
- FINISH:** Black or Hot-Dip Galvanized meeting ASTM A123
- MAX TEMP:** 400°F for Black Carbon Steel
350°F for Hot-Dip Galvanized Carbon Steel
1000°F for 304 and 316 Stainless Steel ²
- STANDARDS:** MSS SP-58 Type 44
- ORDERING:** Specify figure number, pipe size, material and finish. (Order hardware separately.)



PIPE SIZE	A	B	C	D	E	F	ØH	WEIGHT EACH, LBS.	MAX. REC. LOAD, LBS.
2	3 ¹ / ₁₆	8 ³ / ₈	6	6 ³ / ₈	3 ³ / ₈	4	9 ¹ / ₁₆	5.1	390
2 ¹ / ₂	3 ⁵ / ₁₆	8 ³ / ₈	6	6 ³ / ₈	3 ³ / ₈	4	9 ¹ / ₁₆	5.1	390
3	4 ¹ / ₄	8 ³ / ₈	6	6 ³ / ₈	3 ³ / ₈	4	9 ¹ / ₁₆	5.1	390
3 ¹ / ₂	4 ¹ / ₂	8 ³ / ₈	6	6 ³ / ₈	3 ³ / ₈	4	9 ¹ / ₁₆	5.1	390
4	4 ⁷ / ₈	9 ⁷ / ₈	6	7 ⁷ / ₈	4 ³ / ₄	4 ¹ / ₄	9 ¹ / ₁₆	6.3	950
5	5 ⁵ / ₁₆	9 ⁷ / ₈	6	7 ⁷ / ₈	4 ³ / ₄	4 ¹ / ₄	9 ¹ / ₁₆	6.3	950
6	6	9 ⁷ / ₈	6	7 ⁷ / ₈	4 ³ / ₄	4 ¹ / ₄	9 ¹ / ₁₆	6.3	950
8	8 ⁵ / ₈	8 ⁵ / ₈	8	4	7	5	1 ¹ / ₁₆	14	2100
10	9 ⁷ / ₈	8 ⁵ / ₈	8	4	7	5	1 ¹ / ₁₆	14	2100
12	11 ⁷ / ₁₆	11	8	5 ³ / ₄	9	6	1 ³ / ₁₆	21	3075
14	12 ¹ / ₁₆	11	8	5 ³ / ₄	9	6	1 ³ / ₁₆	21	3075
16	13 ¹ / ₂	12 ³ / ₈	10	6 ³ / ₄	10 ³ / ₈	6 ¹ / ₂	1 ³ / ₁₆	34	4980
18	14 ¹¹ / ₁₆	12 ³ / ₈	10	6 ³ / ₄	10 ³ / ₈	6 ¹ / ₂	1 ³ / ₁₆	34	4980
20	15 ¹¹ / ₁₆	12 ³ / ₈	10	6 ³ / ₄	10 ³ / ₈	6 ¹ / ₂	1 ³ / ₁₆	34	4980
24	17 ¹¹ / ₁₆	13 ¹ / ₂	10	7 ¹ / ₂	11 ¹ / ₂	6 ¹ / ₂	1 ³ / ₁₆	40	6100
30	21 ³ / ₄	17	10	10	14 ¹ / ₄	7 ³ / ₄	1 ¹ / ₈	71	7500
36	25 ³ / ₄	20	12	12	17	9	1 ⁵ / ₈	147	12000
42	28 ⁷ / ₈	20	12	12	17	9	1 ⁵ / ₈	147	12000

D.I./C.I. PIPE SIZE	FIG 248 SIZE
3	4
4	5
6	6
8	8
10	10
12	14
14	16
16	18
18	20
20	24
24	30
30	36
36	36
42	42

SS LOAD CORRECTION	
TEMP °F	FACTOR
100	1.00
200	0.80
400	0.67
600	0.59
800	0.54
1000	0.50

Notes:

1. For vertical and lateral adjustment see FIG. #249 Pipe Roller Stand.
2. Maximum Recommended Loads above for carbon steel/cast iron to 400°F. For recommended loads on stainless steel roller stands, multiply the above loads by the load/temperature correction factor.
3. Pipe sizes 36" and 42" not available in stainless steel.
4. Dimension "A" may vary for stainless steel.