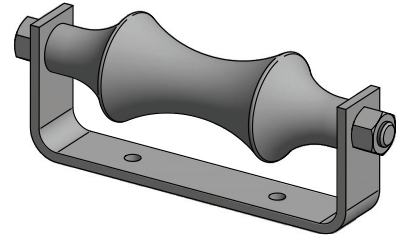


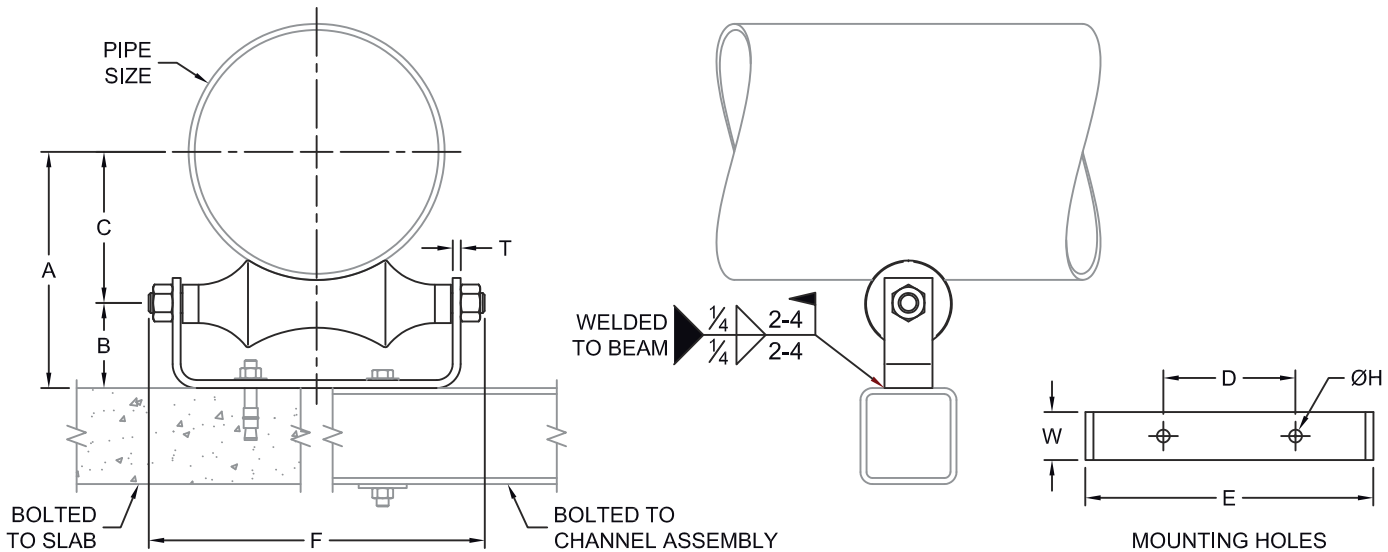


FIG. 245

Roller Chair



- SERVICE:** To support pipe while providing large axial movement. To be bolted or welded to structure.
- MATERIAL:** Carbon Steel body meeting ASTM A36 with gray cast iron roll meeting ASTM A48 Grade 30. Stainless Steel body meeting ASTM A240 with cast roll meeting ASTM 351, Types 304 and 316.
- FINISH:** Black or Hot-Dip Galvanized meeting ASTM A123
- MAX TEMP:** 400°F for Black Carbon Steel
350°F for Hot-Dip Galvanized Carbon Steel
1000°F for 304 and 316 Stainless Steel²
- STANDARDS:** MSS SP-58 Type 44
- ORDERING:** Specify figure number, pipe size, material and finish. (Order hardware separately.)



PIPE SIZE	A	B	C	D	E	F	ØH	T x W	WEIGHT EACH, LBS.	MAX. REC. LOAD, LBS.
3	3 ³ / ₈	1 ³ / ₄	2 ¹ / ₈	2	4 ¹ / ₂	5 ⁷ / ₈	7 ¹ / ₁₆	1/4 x 1 1/4	1.5	390
4	5	2 ¹ / ₄	2 ¹³ / ₁₆	2	5 ³ / ₄	6 ⁷ / ₈	9 ¹ / ₁₆	3/8 x 1 1/2	2.9	950
5	5 ¹³ / ₁₆	2 ⁷ / ₁₆	3 ³ / ₈	2 ¹ / ₂	7	8 ⁷ / ₁₆	9 ¹ / ₁₆	3/8 x 1 1/2	3.5	950
6	6 ⁵ / ₈	2 ¹¹ / ₁₆	3 ¹⁵ / ₁₆	3 ¹ / ₄	8	9 ¹ / ₂	9 ¹ / ₁₆	3/8 x 2	5.5	950
7	7 ⁷ / ₁₆	2 ¹³ / ₁₆	4 ¹ / ₂	3 ¹ / ₂	8 ⁷ / ₈	10 ¹ / ₂	9 ¹ / ₁₆	3/8 x 2	7.0	1350
8	8 ¹ / ₈	3	5 ³ / ₁₆	4	10	11 ⁷ / ₈	11 ¹ / ₁₆	3/8 x 2	7.3	1350
10	9 ⁹ / ₁₆	3 ⁹ / ₁₆	6 ¹ / ₄	5	12 ¹ / ₄	14 ¹ / ₄	11 ¹ / ₁₆	1/2 x 2	12	1730
12	11 ⁹ / ₁₆	4 ¹ / ₈	7 ⁷ / ₁₆	6	14 ¹ / ₄	16 ¹ / ₄	11 ¹ / ₁₆	1/2 x 2	17	2400
14	13	4 ⁵ / ₈	8 ³ / ₈	6 ¹ / ₂	15 ³ / ₈	18	13 ¹ / ₁₆	1/2 x 2 1/2	25	3130
16	14 ³ / ₄	5 ⁵ / ₁₆	9 ⁷ / ₁₆	8 ¹ / ₄	18	21	13 ¹ / ₁₆	1/2 x 3	35	3970
18	16 ¹ / ₄	5 ¹⁵ / ₁₆	10 ⁹ / ₁₆	9 ¹ / ₄	19 ¹ / ₄	22 ⁷ / ₈	13 ¹ / ₁₆	1/2 x 3	37	4200
20	17 ¹³ / ₁₆	6 ⁷ / ₁₆	11 ³ / ₈	10 ¹ / ₄	21 ¹ / ₄	25 ¹ / ₄	13 ¹ / ₁₆	1/2 x 3	45	4550
24	21 ¹¹ / ₁₆	7 ¹³ / ₁₆	13 ⁷ / ₈	12 ¹ / ₄	25 ³ / ₄	30	15 ¹ / ₁₆	5/8 x 4	78	6160
30	25 ¹³ / ₁₆	8 ¹¹ / ₁₆	17 ¹ / ₈	15 ³ / ₈	31 ³ / ₄	36	15 ¹ / ₁₆	5/8 x 4	110	7290

D.I./C.I. PIPE SIZE	FIG 245 SIZE
3	4
4	5
6	6
8	8
10	10
12	14
14	16
16	18
18	20
20	24
24	30
30	N/A

SS LOAD CORRECTION	
TEMP °F	FACTOR
100	1.00
200	0.80
400	0.67
600	0.59
800	0.54
1000	0.50

Notes:

1. For vertical and lateral adjustment see FIG. #249 Pipe Roller Stand.
2. Maximum Recommended Loads above for carbon steel/cast iron to 400°F. For recommended loads on stainless steel roller chairs, multiply the above loads by the load/temperature correction factor.
3. For insulated lines with Pipe Covering Protection Saddles see FIG. #310 to #350 for size selection.
4. For pre-insulated lines see MaxSpan RH in Pre-Insulated Pipe Support Catalog for size selection.