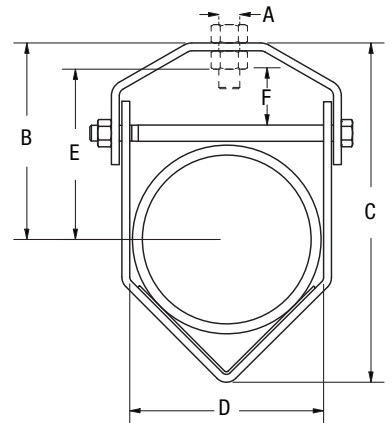
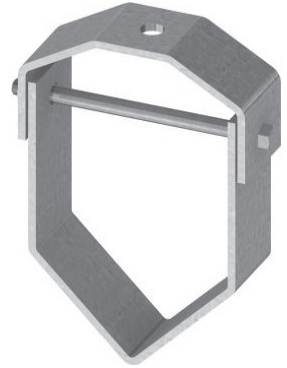




FIG. 230

V-Bottom Adjustable Clevis Hanger



SERVICE: For the suspension of flexible pipe, tubing or hose. Hanger must be used in conjunction with FIG. #235 V-Channel. V-Channel must be cut to allow installation of fittings and couplings. FIG. #230 V-Bottom Adjustable Clevis Hangers must be installed at the end of the run of V-channel. Vertical adjustment of the supporting system is provided by the clevis top. Upper nut must be tightened after the piping system is leveled.

MATERIAL: Carbon Steel

FINISH: Electro-Galvanized

ORDERING: Specify figure number and pipe size. (FIG. #235 V-Channel must be ordered separately.)

SIZE NO.	PIPE SIZE	BOLT	A	B	C	D	E	F	WEIGHT EACH, LBS.	MAX. REC. LOAD, LBS.
1	1/2	1/4	3/8	5 ³ / ₁₆	5 ⁷ / ₈	2 ⁹ / ₁₆	4 ⁷ / ₁₆	1 ¹ / ₄	0.30	250
	3/4	1/4	3/8	5	5 ⁷ / ₈	2 ⁹ / ₁₆	4 ¹ / ₄	1 ¹ / ₄	0.30	250
	1	1/4	3/8	4 ⁷ / ₈	5 ⁷ / ₈	2 ⁹ / ₁₆	4 ¹ / ₁₆	1 ¹ / ₄	0.30	250
	1 ¹ / ₄	1/4	3/8	4 ⁵ / ₈	5 ⁷ / ₈	2 ⁹ / ₁₆	3 ⁷ / ₈	1 ¹ / ₄	0.30	250
	1 ¹ / ₂	1/4	3/8	4 ⁷ / ₁₆	5 ⁷ / ₈	2 ⁹ / ₁₆	3 ¹¹ / ₁₆	1 ¹ / ₄	0.30	250
	2	1/4	3/8	4 ¹ / ₈	5 ⁷ / ₈	2 ⁹ / ₁₆	3 ³ / ₈	1 ¹ / ₄	0.30	250
2	2 ¹ / ₂	3/8	1/2	6 ¹³ / ₁₆	8 ¹⁵ / ₁₆	4 ¹¹ / ₁₆	5 ³ / ₄	2 ³ / ₈	0.96	300
	3	3/8	1/2	6 ³ / ₈	8 ¹⁵ / ₁₆	4 ¹¹ / ₁₆	5 ⁵ / ₁₆	2 ³ / ₈	0.96	300
	4	3/8	1/2	5 ¹¹ / ₁₆	8 ¹⁵ / ₁₆	4 ¹¹ / ₁₆	4 ¹ / ₂	2 ³ / ₈	0.96	300