



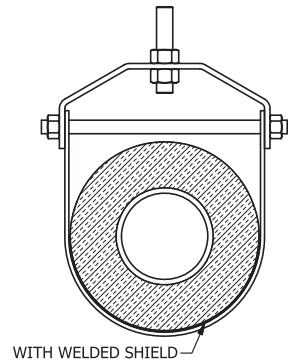
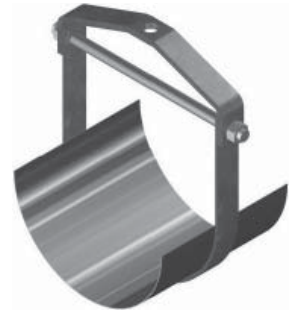
FIG. 220

Adjustable Clevis Hanger w/ Welded Shield

FIG. 221

Adjustable Clevis Hanger w/ Welded MSS Shield

- SERVICE:** For vapor sealed lines.
MATERIAL: Carbon Steel or 304/316 Stainless Steel
FINISH: Electro-Galvanized
ORDERING: Specify figure number, pipe size, insulation thickness, material and finish. (FIG. #220 is supplied with a FIG. #300 Pipe Covering Protection Shield. FIG. #221 is supplied with a FIG. #307 MSS Pipe Covering Protection Shield.)



WITH WELDED SHIELD

| HANGER SIZE SELECTION GUIDE | | | | | | |
|-----------------------------|------------------------------|-------|--------|----|--------|----|
| PIPE SIZE | THICKNESS OF PIPE INSULATION | | | | | |
| | 1/2" | 1" | 1 1/2" | 2" | 2 1/2" | 3" |
| 1/2 | 1 1/2 | 2 1/2 | 3 1/2 | 5 | 6 | 7 |
| 3/4 | 2 | 3 | 3 1/2 | 5 | 6 | 7 |
| 1 | 2 | 3 | 4 | 5 | 6 | 7 |
| 1 1/4 | 2 1/2 | 3 1/2 | 4 | 5 | 6 | 7 |
| 1 1/2 | 2 1/2 | 3 1/2 | 5 | 6 | 7 | 8 |
| 2 | 3 | 4 | 5 | 6 | 7 | 8 |
| 2 1/2 | 3 1/2 | 5 | 6 | 7 | 8 | 10 |
| 3 | 4 | 5 | 6 | 7 | 8 | 10 |
| 3 1/2 | 5 | 6 | 7 | 8 | 10 | 10 |
| 4 | 5 | 6 | 7 | 8 | 10 | 10 |
| 5 | 6 | 7 | 8 | 10 | 10 | 12 |
| 6 | 7 | 8 | 10 | 10 | 12 | 12 |
| 8 | 10 | 10 | 12 | 12 | 14 | 16 |
| 10 | 12 | 12 | 14 | 16 | 16 | 18 |
| 12 | 14 | 16 | 16 | 18 | 18 | 20 |
| 14 | 16 | 16 | 18 | 18 | 20 | 20 |
| 16 | 18 | 18 | 20 | 20 | 24 | 24 |