



FIG. 136

Hold Down Strap

FIG. 137

Hold Down Strap for DI Pipe

- SERVICE:** To hold piping to structure and to maintain lateral position. Slotted holes provide for bolt and pipe tolerances.
- MATERIAL:** Carbon Steel meeting ASTM A36. Stainless Steel meeting ASTM A240, Types 304 and 316
- FINISH:** Black, Electro-Galvanized and Hot-Dip Galvanized
- MAX TEMP:** 650°F for Black Carbon Steel and 304 and 316 Stainless Steel
350°F for Hot-Dip Galvanized Carbon Steel
- STANDARDS:** MSS SP-58 Type 26 (Pipe Clip)
- ORDERING:** Specify figure number, pipe size, material and finish (Order hardware separately.) Special designs available upon request.

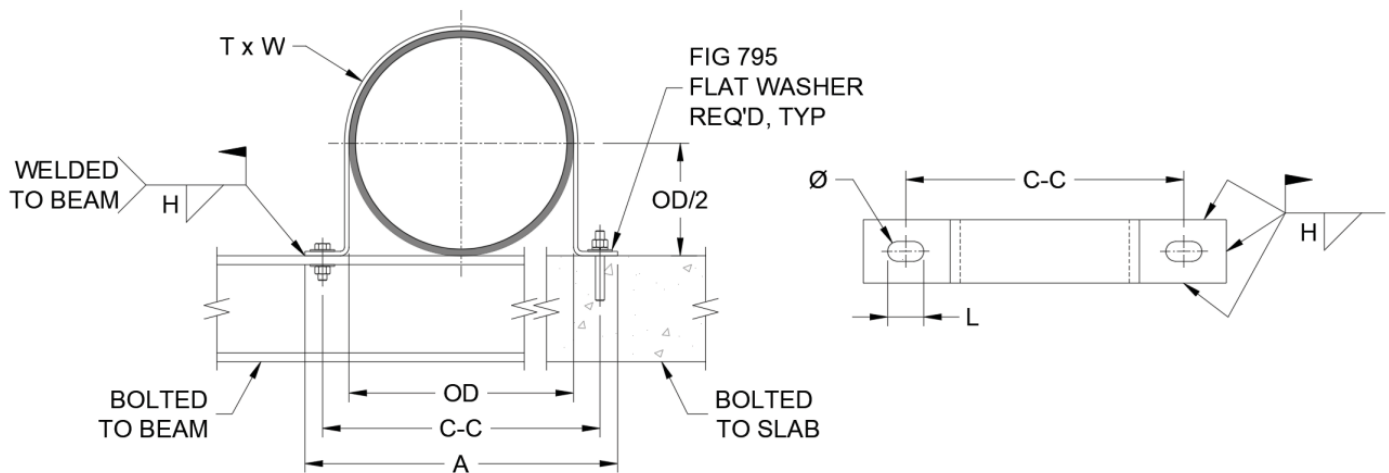


FIG 136 (IPS)					FIG 137 (DI)								
PIPE SIZE	OD	C-C	A	WEIGHT EACH, LBS.	T x W	BOLT SIZE	SLOT Ø x L	WELD H	DI PIPE SIZE	OD	C-C	A	WEIGHT EACH, LBS.
3	3.5	6¼	8	1.3	¼ x 1½	⅜	7/16 x ¾	3/16	3	3.96	6¾	8½	1.5
3½	4.0	6¾	8½	1.5	¼ x 1½	⅜	7/16 x ¾	3/16	--	--	--	--	--
4	4.5	7¼	9	1.6	¼ x 1½	⅜	7/16 x ¾	3/16	4	4.80	8½	9½	1.7
5	5.563	8¼	10	1.9	¼ x 1½	⅜	7/16 x ¾	3/16	--	--	--	--	--
6	6.625	9¾	12¼	3.0	¼ x 2	½	9/16 x 1	3/16	6	6.90	10½	12¾	3.2
8	8.625	11¾	14¼	3.8	¼ x 2	½	9/16 x 1	3/16	8	9.05	12¾	14½	3.9
10	10.75	13¾	16¾	4.5	¼ x 2	½	9/16 x 1	3/16	10	11.1	14½	16¾	4.7
12	12.75	15¾	18¾	5.2	¼ x 2	½	9/16 x 1	3/16	12	13.2	16¾	18¾	5.4
14	14	18	20½	8.7	⅜ x 2	5/8	1¼ x 1	¼	14	15.3	19¾	21¾	9.4
16	16	20	22½	9.7	⅜ x 2	5/8	1¼ x 1	¼	16	17.4	21¾	23¾	11
18	18	22	24½	11	⅜ x 2	5/8	1¼ x 1	¼	18	19.5	23½	26	12
20	20	24	26½	12	⅜ x 2	5/8	1¼ x 1	¼	20	21.6	25¾	28¾	13
24	24	28½	32	22	⅜ x 3	¾	1¾ x 1¼	¼	24	25.8	30¾	33¾	23
30	30	34½	38	27	⅜ x 3	¾	1¾ x 1¼	¼	30	32.0	36½	40	28
36	36	40½	44	31	⅜ x 3	¾	1¾ x 1¼	¼	36	38.3	42¾	46¾	33