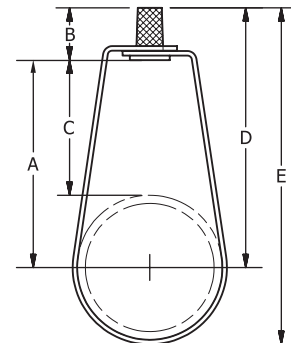




FIG. 110

Adjustable Swivel Ring Hanger

- SERVICE:** For suspension of non-insulated, stationary piping services.
Approved for use without additional locking nuts normally required with pipe hangers.
- MATERIAL:** Carbon Steel
- FINISH:** Electro-Galvanized
- STANDARDS:** MSS SP-58 Type 10
- APPROVALS:** FM (3/4" - 2"), UL (3/4" - 8")
- ORDERING:** Specify figure number and pipe size.



PLUMBING SERVICE HANGER									
PIPE SIZE	PIPE OD	ROD SIZE	A	B	C	D	E	WEIGHT EACH, LBS.	MAX. REC. LOAD, LBS.
1/2	0.840	3/8	1 5/8	7/8	1 13/16	2 1/2	2 15/16	0.08	400
3/4	1.050	3/8	1 9/16	7/8	1 1/16	2 7/16	2 15/16	0.08	400
1	1.315	3/8	1 11/16	7/8	1	2 9/16	3 1/4	0.08	600
1 1/4	1.660	3/8	1 5/8	7/8	1 3/16	2 1/2	3 5/16	0.10	600
1 1/2	1.900	3/8	1 13/16	7/8	7/8	2 1/16	3 5/8	0.10	600
2	2.375	3/8	2 1/2	7/8	1 5/16	3 3/8	4 9/16	0.12	600
2 1/2	2.875	1/2	2 3/4	1 1/16	1 5/16	3 13/16	5 1/4	0.32	600
3	3.500	1/2	3 1/8	1 1/16	1 3/8	4 3/16	5 15/16	0.35	600
3 1/2	4.000	1/2	3 3/8	1 1/16	1 3/8	4 7/16	6 7/16	0.39	600
4	4.500	5/8	3 7/8	1 1/8	1 5/8	5	7 1/4	0.43	1000
5	5.563	5/8	4 1/2	1 1/8	1 3/4	5 5/8	8 3/8	0.65	1000
6	6.625	3/4	5 13/16	1 3/8	2 1/2	7 3/16	10 1/2	1.09	1250
8	8.625	3/4	7 9/16	1 3/8	3 1/4	8 7/16	13 1/4	1.24	1250

NOTE: In accordance with the International Plumbing Code (IPC)