



FIG. 110

Adjustable Swivel Ring Hanger, NFPA

SERVICE: For suspension of non-insulated, stationary piping services. Approved for use without additional locking nuts normally required with pipe hangers.

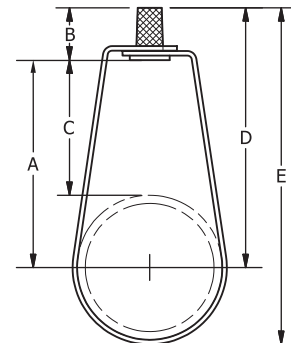
MATERIAL: Carbon Steel

FINISH: Electro-Galvanized

STANDARDS: MSS SP-58 Type 10

APPROVALS: FM NFPA 3/4" - 8", UL NFPA 3/4" - 8"

ORDERING: Specify figure number and pipe size.



SPRINKLER SERVICE HANGER - NFPA								
PIPE SIZE	NFPA ROD SIZE	A	B	C	D	E	WEIGHT EACH, LBS.	MAX. REC. LOAD, LBS.
1/2	3/8	1 5/8	7/8	1 3/16	2 1/2	2 7/8	0.08	400
3/4	3/8	1 9/16	7/8	1 1/16	2 7/16	2 5/16	0.08	400
1	3/8	1 3/4	7/8	1 1/16	2 5/8	3 1/4	0.08	600
1 1/4	3/8	1 11/16	7/8	7/8	2 9/16	3 3/8	0.10	600
1 1/2	3/8	1 13/16	7/8	7/8	2 11/16	3 5/8	0.10	600
2	3/8	2 1/2	7/8	1 5/16	3 3/8	4 1/2	0.12	600
2 1/2	3/8	3 1/8	7/8	1 3/8	3 7/8	5 3/8	0.24	600
3	3/8	3 5/8	7/8	1 5/8	4 1/2	6 1/4	0.28	600
3 1/2	3/8	4	7/8	1 3/4	4 7/8	6 7/8	0.32	600
4	3/8	4 1/8	7/8	1 5/8	5	7 1/4	0.32	1000
5	1/2	4 1/4	1 1/16	1 7/8	5 3/4	8 1/2	0.62	1000
6	1/2	5 1/8	1 1/16	2 1/8	6 3/4	10 1/8	0.65	1250
8	1/2	7	1 1/16	2 3/8	7 7/8	12 1/4	1.00	1250

NOTE: In accordance with the National Fire Protection Association (NFPA 13)